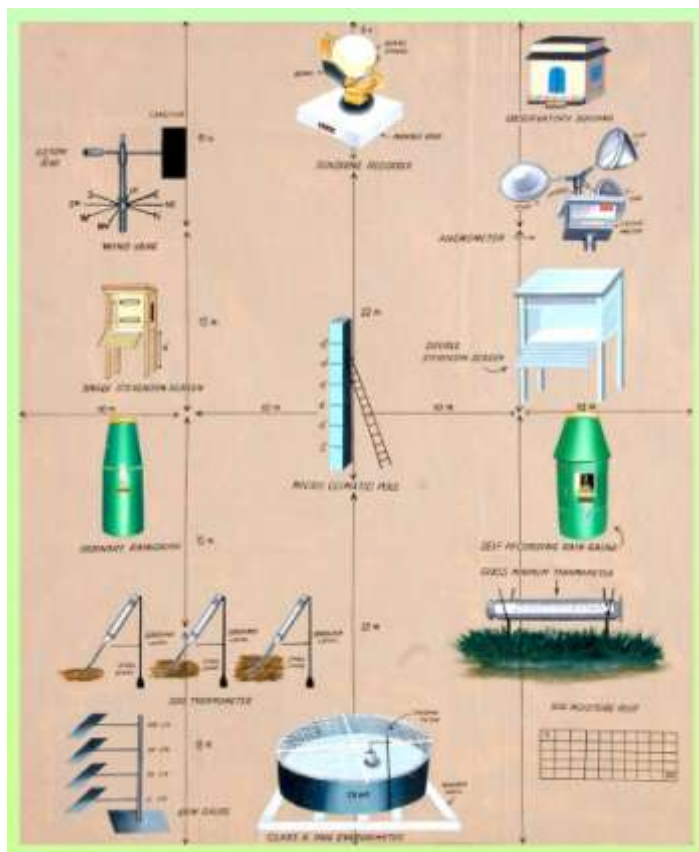


15-January-2011

Annual Weather Report 2011



DD Sahu, MC Chopada, BV Parmar and HL Kacha



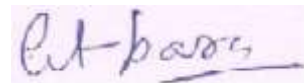
AGROMETEOROLOGICAL CELL
DEPARTMENT OF AGRONOMY
COLLEGE OF AGRICULTURE
JUNAGADH AGRICULTURAL UNIVERSITY
JUNAGADH - 362 001

Preface

Crop yield is the function of many factors like weather, soil fertility and water management. Of these weather plays an important role. Yield of a crop depends on the weather conditions during a season. At all Agricultural Research Stations Agro-meteorological observations are recorded from the observatories to study the crop weather relationship.

*The **Annual Weather Report** has been published by this department every year using observed weather data at the observatory located at Instructional Farm. The report carries daily, weekly, monthly, seasonal and annual weather data pertaining to all parameters like temperature, rainfall, relative humidity, wind speed, wind direction, bright sunshine hour and evaporation. The bulletin also contains the frequency of hot days during summer, cold days during winter, cloudy days and rainy days during monsoon seasons for last 26 years (1985-2010) which is very useful for climate variability study.*

This type of Annual Weather Report should be published at all Research Stations using their respective observatory data which will be useful for future studies. This will be useful for all the research scientists and post graduate students for interpretation of weather conditions during their field experiments. This compilation is appreciated for easy availability of weather data for all users.



*Dr. V.D. Khanpara
Professor and Head
Department of Agronomy
College of Agriculture
JAU, Junagadh*

Contents

Table No.	Title	Page
	Introduction, Methodology and Summary	1
1	Daily rainfall at Junagadh	3
2 (A/B)	Weekly mean weather data	5
2 (C)	Weekly normal weather data (1965-2010)	7
3 (A/B)	Monthly mean weather data	8
4(A/B/C/D)	Seasonal weather conditions	9
5	Frequency of cloudy and rainy days	11
6	Number of hot days in summer	12
7	Number of cold days in winter	13
8	Mean minimum and lowest minimum temperature during winter season	14
9	Mean maximum and highest maximum temperature during summer season	15
10	Decadal rainfall at Junagadh (1961-2010)	16
	Appendix-1-Daily weather data	17
	Appendix-2- Standard meteorological periods and weeks	42

Introduction

Weather conditions during crop seasons strongly influences the crop growth and development. The variation in crop productivity is mainly due to weather fluctuations. Weather and climate are the important factors determining the growth, development and yield of crops. Weather conditions affect the agricultural operations and experimental treatments also. Crop yields are the integrated result of external and internal processes that occur during the crop growing period. The external environment is the climate which regulates and the weather determines the growth and development and finally the yield of the crop. It is therefore; necessary to measure the meteorological parameters in all agricultural experimental stations. The interpretation of experimental results in the light of weather conditions prevailing during the period of crop growth is important. Weather observations are also required for accurate weather forecasting and comparison of forecasted weather.

In view of the above the weather parameters recorded at the Agro meteorological observatory, Department of Agronomy, Junagadh Agricultural University, Junagadh from 1st January 2011 to 31st December 2011 are analyzed and presented in this report.

Methodology

The daily, weekly, monthly, seasonal and annual weather data are presented along with the entire statistical parameters viz. mean, SD, coefficient of variation, mode, lowest and highest values. The year is divided into four seasons viz. winter (December to February), summer (March to May), monsoon season (June to September) and post monsoon (October and November). The hot days, cold days, cloudy days and rainy days for last 27 years (1985-2011) are also presented in this report.

A hot day is a day with maximum temperature 40 °C or more than 40 °C.

A cold day is a day with minimum temperature 10 °C or less than 10 °C.

A rainy day is a day receiving a 2.5 mm of rainfall or more.

A cloudy day is a day with less than 2.0 hours bright sunshine hours.

Summary

The variation and distribution of all weather parameters viz. rainfall, temperature, relative humidity, wind speed and direction, bright sunshine hours, evaporation, and cloud cover etc are discussed below.

1. Rainfall and rainy days

An annual and monsoon rainfall of **962.7** mm was received in 45 rainy days during the year 2011. The rains commenced from 12th June, one week earlier than the normal onset of monsoon and withdrew from 17th September.

2. Maximum temperature

The highest maximum temperature of 41.6 °C was recorded on 18th March-2011.

3. Minimum Temperature

The lowest minimum temperature of 5.2 °C was recorded on 17th January-2011.

Summary of weather parameter during 2011

Total rainfall (rainy days)	:	963 (45)
Onset of monsoon	:	12 th June, 2011
Withdrawal of monsoon	:	17 th September, 2011
Maximum temperature	:	41.6 °C (18/03/2011)
Minimum temperature	:	5.2 °C (17/01/2011)
Wind speed (km/hrs)	:	5.9 kmph
Evaporation (mm)	:	5.6 mm
Bright sunshine (hrs)	:	6.9 hr/day

Table-1 Daily Rainfall (mm) at Junagadh -Year-2011

Date	Jan	Feb	Mar	Apr	May	Jun	Jul	Aug	Sep	Oct	Nov	Dec
1								92.5	2.4			
2								15.8				
3							2.2	2.2	2.8			
4						2.2	8.0	5.8	12.0			
5							5.8	6.1				
6									102.0			
7							6.0		44.0			
8							10.4	1.0	8.0			
9												
10							30.2	1.2				
11							5.0	9.0				
12						28.4	2.2	14.5	6.0			
13						6.4		2.0	20.0			
14						0.5		25.8	7.4			
15							1.5	2.4	1.0			
16								4.0				
17									30.4			
18							42.5					
19							24.2	4.6				
20							1.1					
21								43.0				
22								8.6				
23								6.0				
24								5.8	2.4			
25							3.5	9.5	2.0			
26							91.6	14.5				
27							25.0	4.8				
28							8.0	17.4	0.8			
29							2.8	4.0	0.6			
30							13.2	41.2				
31							58.5					
Total						37.5	341.7	341.7	241.8			
R.D.						2	15	19	9			
Grand Total			962.7			Rainy Days:			45			
< 2.5	0	0	0	0	0	2	4	5	6	0	0	0
2.5 - 10	-	0	0	0	0	1	7	11	3	0	0	0
10.-30	-	0	0	0	0	1	4	5	2	0	0	0
30-60	-	0	0	0	0	0	3	2	2	0	0	0
>60	-	0	0	0	0	0	1	1	1	0	0	0

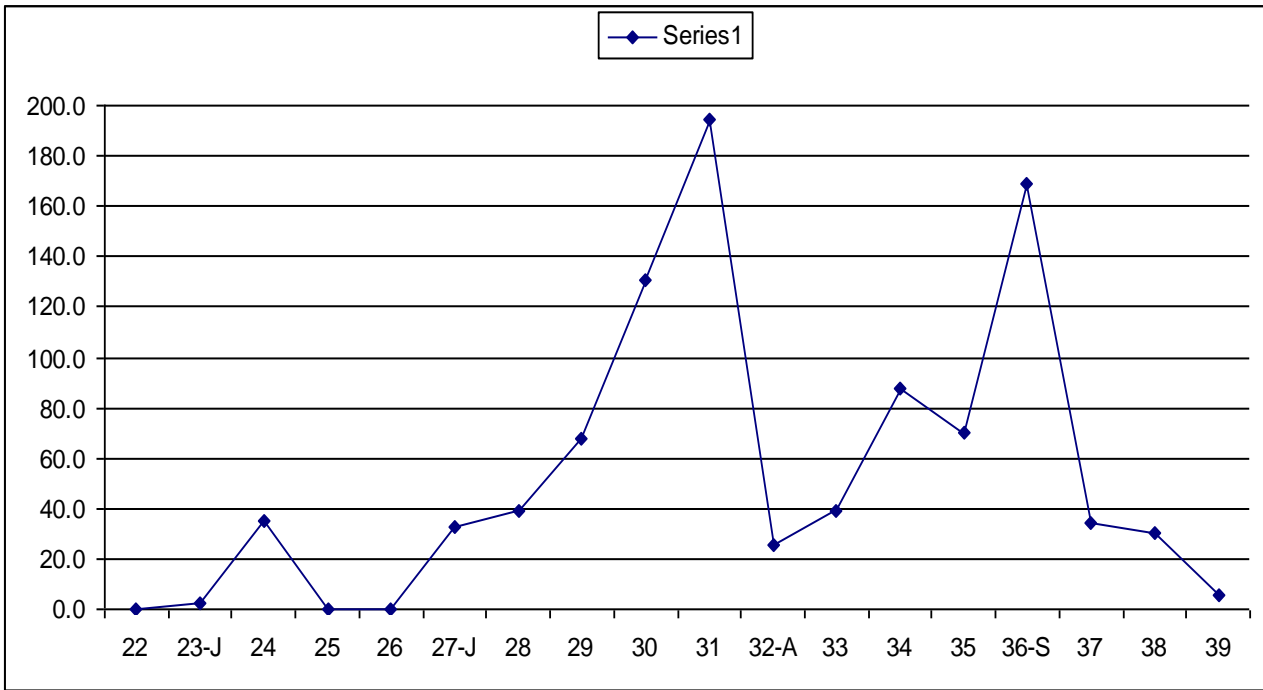


Fig. 1:- Weekly rainfall pattern-2011

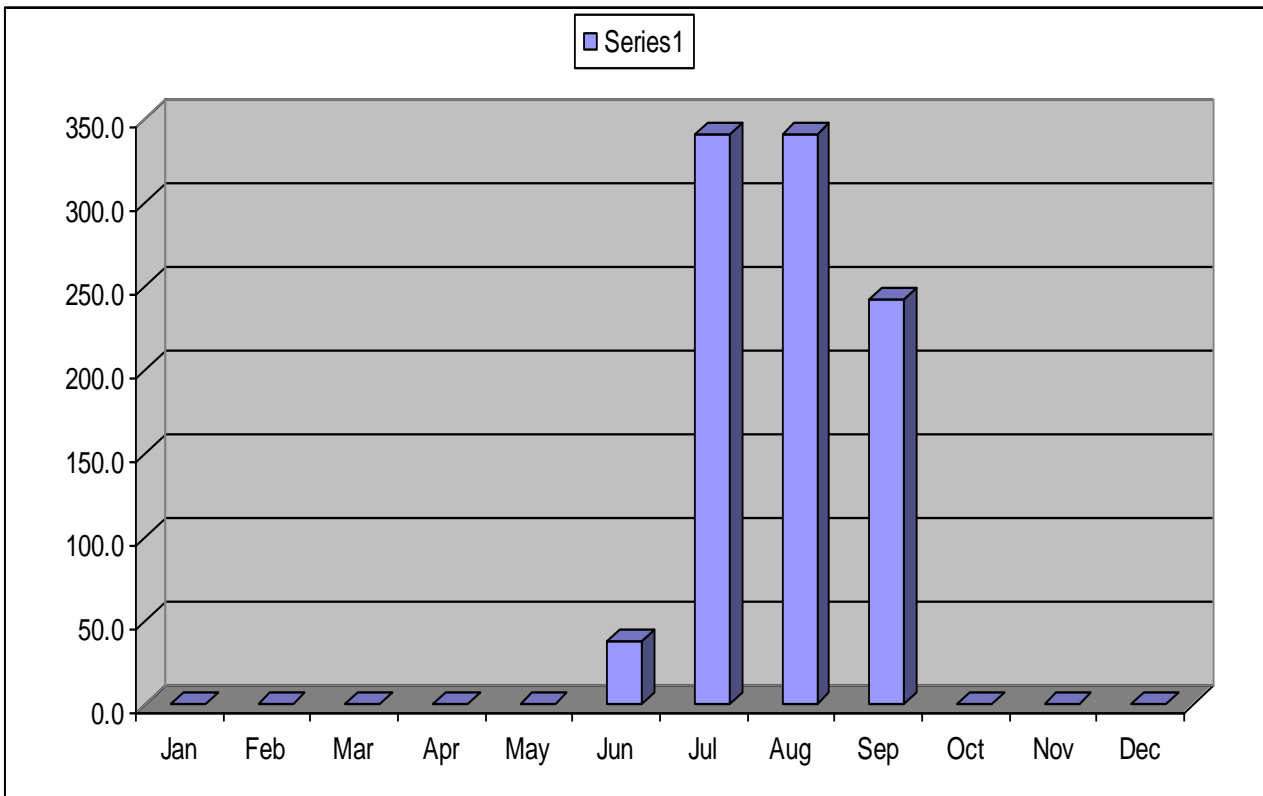


Fig. 2:- Monthly rainfall pattern-2011

Table-2(A) Weekly mean weather data- I during 2011

Week No	Temp. C ^o		R.H.%		WS	BSS	Eo	Rain	Rainy
	Max	Min	I	II	(kmph)	(hrs)	(mm)	(mm)	Days
1-J	27.6	9.7	73	28	3.4	8.3	3.7		
2	28.7	9.7	73	27	3.4	9.0	3.7		
3	28.6	10.4	79	24	3.6	9.2	4.0		
4	29.6	14.2	70	26	5.3	9.5	5.5		
5	30.4	14.3	74	31	4.4	9.5	5.2		
6-F	30.5	14.1	82	37	3.8	9.3	4.5		
7	30.3	15.8	76	36	4.5	9.1	4.6		
8	30.1	14.3	64	25	5.2	9.8	6.0		
9	33.5	16.0	60	23	4.4	10.0	6.7		
10-M	34.3	18.4	53	19	5.6	10.1	7.7		
11	38.4	17.2	48	16	4.6	10.4	7.9		
12	36.6	19.2	84	26	5.4	10.3	7.9		
13	38.5	20.6	59	15	5.7	10.2	9.3		
14-A	37.5	21.7	50	11	6.1	9.9	9.2		
15	39.2	23.3	67	20	5.9	9.4	9.4		
16	39.6	23.2	73	16	5.9	9.8	9.7		
17	40.6	23.8	73	19	7.0	10.6	10.3		
18	37.8	24.8	81	35	8.2	10.2	9.0		
19-M	37.8	25.5	81	36	9.1	9.6	9.0		
20	38.6	26.0	85	34	8.5	10.2	9.0		
21	36.8	26.8	80	43	12.6	7.9	8.6		
22	38.6	27.0	78	45	9.7	9.0	9.4		
23-J	39.9	27.4	79	40	7.4	3.2	6.4	2.2	
24	35.2	25.8	85	60	7.9	3.3	5.6	35.3	2
25	34.9	27.5	78	55	14.9	0.1	7.4		
26	34.5	27.0	78	55	15.7	0.0	6.5		
27-J	34.2	25.1	85	59	8.7	0.2	5.0	32.4	4
28	30.5	24.8	91	78	7.2	0.0	2.8	38.9	2
29	32.0	25.5	90	73	7.7	0.5	3.0	67.8	2
30	31.4	25.4	95	82	6.2	0.9	3.0	130.9	4
31	29.9	24.6	95	88	5.0	0.9	2.0	194.1	6
32-A	30.8	26.3	91	81	11.1	0.6	3.0	25.7	2
33	29.9	25.2	91	82	6.7	0.7	2.1	38.8	3
34	30.2	24.6	92	86	3.2	0.6	1.9	87.4	6
35	30.9	24.7	90	79	5.7	1.8	2.8	69.8	4
36-S	30.3	25.1	92	83	8.5	1.7	2.4	168.8	5
37	30.0	24.8	93	82	5.4	1.6	1.8	34.4	3
38	30.6	23.7	87	65	5.1	6.9	3.5	30.4	1
39	32.3	22.8	84	58	3.4	7.6	3.9	5.8	
40-O	33.3	23.4	75	50	4.2	13.6	4.7		
41	35.4	25.5	66	37	5.4	9.1	5.9		
42	36.5	24.1	70	36	2.9	7.0	5.2		
43	35.9	19.0	69	28	2.8	9.6	5.2		
44	35.7	22.8	64	31	3.1	6.4	5.2		
45-N	36.0	21.1	71	31	2.4	9.2	4.7		
46	34.8	19.4	72	30	3.5	9.5	5.4		
47	34.4	16.6	66	27	2.7	9.5	5.1		
48	33.3	21.3	64	38	4.2	4.8	4.6		
49-D	33.6	17.1	78	36	3.1	9.3	4.9		
50	30.9	12.9	55	22	4.2	9.3	5.0		
51	30.6	12.5	66	26	4.4	8.4	4.8		
52	28.5	10.8	58	24	4.8	8.5	4.7		
Mean	33.7	21.0	76	43	6.0	6.8	5.6	962.7	45
S.D.	3.6	5.3	12	23	2.9	3.9	2.4		
C.V.%	10.6	25.3	16	53	49.0	57.7	42.5		
Highest	40.6	27.5	95	88	15.7	13.6	10.3		
Lowest	27.6	9.7	48	11	2.4	0.0	1.8		

Table-2(B) Weekly mean weather data- II during 2011

Week No	D.B.		W.B.		Soil Temperature					
	I	II	I	II	5(I)	10(I)	20(I)	5(II)	10(II)	20(II)
1	11.8	27.6	9.5	16.8	18.0	19.2	23.6	29.5	27.0	25.1
2	13.1	28.0	10.7	16.9	18.5	19.6	24.2	30.2	27.5	24.8
3	12.3	28.3	10.4	16.5	19.3	20.5	24.9	30.7	28.1	25.4
4	14.6	28.7	11.7	17.1	21.1	22.4	25.8	31.7	29.3	26.5
5	16.2	30.2	13.5	19.2	21.8	23.2	26.6	32.8	30.2	27.1
6	16.4	29.1	14.7	20.0	22.7	24.3	27.0	31.1	31.3	28.4
7	18.2	28.5	16.0	18.8	22.9	24.3	27.0	33.9	31.5	28.3
8	18.1	30.2	14.3	17.9	22.9	24.3	28.2	35.0	32.1	28.8
9	19.3	33.0	14.8	19.5	24.4	25.7	29.7	37.5	34.1	30.5
10	21.7	33.7	15.9	18.9	25.7	26.9	30.9	37.5	35.6	31.7
11	22.4	38.1	15.6	20.8	26.2	27.7	31.9	40.2	37.3	33.0
12	22.4	35.6	20.5	21.9	27.6	28.9	33.1	39.7	37.7	33.7
13	24.1	37.6	18.9	20.0	27.9	29.3	33.8	41.6	39.1	34.7
14	25.7	37.6	18.5	19.1	27.9	29.4	33.8	41.3	38.9	34.7
15	26.8	38.3	22.3	22.2	30.2	31.7	35.3	42.8	40.7	36.1
16	26.6	39.4	22.9	21.7	30.9	32.4	36.3	44.2	42.1	37.1
17	26.5	39.5	22.9	22.6	31.0	32.7	35.9	43.9	42.2	37.9
18	27.0	36.5	24.6	24.4	31.7	33.0	37.0	43.4	41.9	37.7
19	27.7	36.5	25.2	24.7	32.2	33.4	37.2	44.0	42.3	37.8
20	28.1	37.8	25.9	25.2	32.5	33.9	37.2	44.3	42.5	38.3
21	29.2	36.2	26.6	26.4	32.4	33.6	36.8	45.1	41.3	37.7
22	29.6	36.2	26.6	26.2	33.5	34.6	37.9	44.5	42.5	38.6
23	29.7	38.8	26.9	27.4	33.1	33.9	37.5	44.6	42.3	38.0
24	28.5	33.2	26.4	26.9	30.6	31.2	35.2	39.4	37.0	36.0
25	29.5	34.0	26.5	26.6	31.2	32.1	34.9	37.6	36.4	35.6
26	29.1	32.8	26.2	25.9	30.8	31.4	34.4	36.3	35.3	34.8
27	27.5	32.3	25.4	26.1	29.3	29.7	33.0	35.9	35.2	33.6
28	26.7	29.4	25.6	26.3	27.5	27.8	29.6	29.7	29.6	30.6
29	27.0	30.8	25.7	26.7	27.9	28.2	30.8	30.7	30.2	31.1
30	26.6	29.1	25.9	26.8	27.7	28.0	30.4	31.6	31.1	30.9
31	26.2	28.2	25.6	26.5	27.2	27.3	29.4	30.6	30.0	30.1
32	27.0	28.8	25.9	26.2	27.3	27.7	30.1	29.9	30.0	30.4
33	26.7	29.0	25.7	26.6	27.0	27.4	29.4	29.9	29.6	30.0
34	26.3	27.5	25.3	25.7	27.0	27.4	29.7	30.4	30.2	30.3
35	26.4	29.6	25.0	26.6	26.9	27.1	29.5	31.5	30.7	30.3
36	26.6	28.4	25.7	26.2	27.3	27.5	29.8	30.1	29.9	30.2
37	26.0	28.4	25.2	25.8	26.8	27.0	29.0	29.9	29.5	29.5
38	26.1	30.7	24.5	25.5	26.3	26.9	29.4	32.7	31.7	30.4
39	26.0	31.1	24.0	24.7	25.8	26.4	29.7	33.8	32.7	30.7
40	26.6	32.5	23.4	24.6	26.1	26.9	30.2	36.6	34.7	32.0
41	28.1	35.4	23.2	24.1	28.5	29.1	32.7	40.5	38.3	34.0
42	26.6	35.7	22.7	24.2	29.4	30.3	33.9	41.0	38.7	35.3
43	23.3	35.7	19.2	22.4	27.1	28.3	32.8	40.5	37.6	34.3
44	25.4	34.5	20.7	22.3	27.5	29.9	33.4	38.7	36.8	34.7
45	24.5	35.2	21.2	22.6	28.5	29.6	33.6	39.8	37.5	34.5
46	23.2	33.8	19.6	21.5	27.1	28.7	32.6	39.0	36.3	33.7
47	20.0	33.6	16.2	20.7	25.1	26.9	30.9	37.7	34.9	32.0
48	23.9	32.4	19.4	22.2	26.5	27.6	31.4	35.9	33.6	31.6
49	20.2	32.3	17.8	21.7	25.3	26.8	30.9	37.0	34.1	31.8
50	16.8	30.2	12.0	17.5	21.0	22.9	27.3	32.4	30.8	28.8
51	15.2	29.8	11.9	17.9	20.7	22.3	27.0	32.4	29.5	27.6
52	14.5	27.2	10.2	15.7	18.9	20.5	25.1	30.6	27.6	26.0
Mean	23.6	20.7	32.6	22.7	26.8	27.8	31.3	36.4	34.6	32.2
S.D.	5.1	5.5	3.7	3.5	3.9	3.8	3.7	5.1	4.7	3.8
C.V.%	21.4	26.5	11.3	15.4	14.6	13.8	11.9	14.1	13.7	11.7
Highest	29.7	26.9	39.5	27.4	33.5	34.6	37.9	45.1	42.5	38.6
Lowest	11.8	9.5	27.2	15.7	18.0	19.2	23.6	29.5	27.0	24.8

Table-2(C) Weekly normal weather data at Junagadh (1965-2010)

Week No	Temperature °C		RH. %	W.S.	BSS	EVAPO.	Rainfall	Rainy
	Max	Min	Average	(kmph.)	(hrs.)	(mm)	(mm)	Days
1	29.5	10.6	55	6.4	8.9	5.6	0.3	
2	29.7	10.7	55	7.2	9.1	5.7	0.1	
3	29.6	10.0	54	6.3	9.6	5.9	0.3	
4	30.6	11.8	54	6.5	9.6	6.0	0.0	
5	31.1	11.1	53	6.7	9.6	6.6	0.0	
6	31.6	12.3	52	6.8	9.8	7.0	0.3	
7	31.8	13.6	55	6.5	9.6	6.8	0.1	
8	32.8	14.7	54	7.1	9.8	7.4	0.8	
9	34.1	15.5	52	7.3	9.8	8.1	0.0	
10	35.3	16.9	51	7.4	9.7	9.0	0.1	
11	36.2	18.5	53	8.0	9.4	9.1	0.0	
12	37.0	19.1	56	8.3	9.6	9.4	0.8	
13	37.8	20.4	55	8.7	9.4	10.1	0.1	
14	38.5	21.0	54	7.9	9.8	10.5	0.0	
15	39.0	21.6	61	8.4	9.9	10.2	0.4	
16	39.3	22.5	62	9.0	10.1	10.7	0.0	
17	39.2	23.4	65	9.0	9.9	10.5	0.2	
18	39.2	24.1	65	9.8	10.1	10.4	0.5	
19	39.4	24.7	69	9.8	9.9	10.1	0.0	
20	39.4	25.3	70	10.5	10.1	10.6	0.8	
21	38.5	26.0	73	11.7	9.8	10.5	0.2	
22	37.8	26.2	71	12.5	9.5	10.3	4.8	
23	37.6	26.7	73	13.2	8.2	9.5	13.9	1
24	36.4	26.4	74	12.7	5.9	8.3	26.2	1
25	34.9	26.3	78	13.4	4.1	7.7	43.5	2
26	34.4	26.2	78	12.1	4.1	7.3	76.3	3
27	33.3	25.6	83	11.6	4.1	6.4	83.8	3
28	32.8	25.5	85	12.2	2.8	5.1	82.9	3
29	31.6	25.1	88	10.6	2.2	5.0	90.2	3
30	31.4	24.9	88	11.4	2.4	5.2	67.9	3
31	30.6	24.6	88	10.5	2.4	4.3	50.8	3
32	30.6	24.2	88	10.0	2.2	3.7	51.7	3
33	31.0	23.8	88	8.4	2.1	3.6	41.2	2
34	31.5	23.7	87	7.3	3.2	4.0	23.7	2
35	31.6	23.5	86	6.6	3.8	3.8	39.0	3
36	31.7	23.3	85	6.2	4.9	4.4	28.8	2
37	32.5	22.7	83	5.3	6.6	4.3	32.2	2
38	33.7	22.5	79	5.0	7.5	4.7	18.0	2
39	34.8	23.4	78	4.9	7.6	4.7	17.2	1
40	35.7	23.1	73	5.1	8.3	5.1	14.1	1
41	36.8	22.5	67	4.4	8.7	5.4	8.5	1
42	36.6	20.7	63	4.8	8.8	5.7	5.4	
43	36.4	20.0	62	5.0	8.9	5.7	5.5	1
44	35.9	18.4	56	5.5	9.3	5.9	6.2	
45	35.3	17.9	56	4.7	8.7	5.8	8.4	
46	34.7	18.2	57	4.9	8.5	5.5	1.1	
47	33.5	16.8	58	4.2	8.4	5.0	3.3	
48	32.1	14.9	55	6.0	8.7	5.5	1.0	
49	32.3	12.9	56	5.7	8.8	5.3	0.3	
50	31.7	11.2	57	5.5	8.5	4.9	1.2	
51	31.2	11.7	56	5.2	8.4	5.1	0.1	
52	30.1	10.3	56	5.8	8.3	5.1	0.2	
Mean	34.2	19.9	66.7	7.9	7.7	6.8	852.4	42
Highest	39.4	26.7	88.0	13.4	10.1	10.7	--	--
Lowest	29.5	10.0	51.0	4.2	2.1	3.6	--	--

Month	Temperature °C			RH. %		Mean	W.S.	BSS	Evapo	R F	Rainy
	Max	Min	Mean	I	II		(kmph)	(hrs.)	(mm)	(mm)	Days
Jan	28.6	11.4	20.0	73	27	50	4.0	9.0	4.3	0.0	0
Feb	30.7	14.6	22.6	72	31	52	4.4	9.5	5.2	0.0	0
Mar	36.6	18.5	27.6	61	19	40	5.1	10.2	8.0	0.0	0
Apr	39.1	23.0	31.1	66	17	42	6.3	10.0	9.6	0.0	0
May	37.9	25.9	31.9	81	37	59	9.5	9.6	9.0	0.0	0
Jun	36.3	26.9	31.6	80	53	66	11.3	2.2	6.8	37.5	2
Jul	32.0	25.2	28.6	90	74	82	7.4	0.4	3.4	341.7	15
Aug	30.3	25.1	27.7	92	83	88	6.5	0.7	2.3	341.7	19
Sep	30.9	24.2	27.5	89	72	81	5.7	4.5	3.0	241.8	9
Oct	35.4	23.0	29.2	70	37	53	3.7	9.7	5.2	0.0	0
Nov	34.7	20.0	27.3	66	32	49	3.3	7.8	5.1	0.0	0
Dec	31.1	13.7	22.4	66	27	47	4.1	8.8	4.8	0.0	0
Total	404	252	328	907	509	708	71	82	67	963	45
Mean	33.6	21.0	27.3	75.6	42.4	59.0	5.9	6.9	5.6	80.2	3.8
S.D.	3.4	5.3	3.8	10.6	22.5	16.3	2.5	3.8	2.3	140.2	6.8
C.V.%	10.2	25.2	13.9	14.0	53.1	27.7	41.5	55.5	42.0	174.7	180.2
Highest	39.1	26.9	31.9	92.1	83.1	87.6	11.3	10.2	9.6	341.7	19.0
Lowest	28.6	11.4	20.0	61.3	17.4	40.2	3.3	0.4	2.3	0.0	0.0

Month	D.B.		W.B		Soil Temperature					
	I	II	I	II	5cm(I)	10cm(I)	20cm(I)	5cm(II)	10cm(II)	20cm(II)
Jan	13.4	28.2	10.9	16.9	19.5	20.6	24.8	30.6	28.1	25.5
Feb	17.4	29.9	14.6	19.1	22.8	24.3	27.5	33.7	31.7	28.5
Mar	22.1	36.0	17.3	20.3	26.6	27.9	32.1	39.6	37.0	32.9
Apr	26.4	38.5	21.7	21.5	30.0	31.5	35.3	43.0	40.9	36.4
May	28.2	36.9	25.7	25.4	32.4	33.6	37.2	44.3	42.1	38.0
Jun	29.3	34.6	26.5	26.6	31.7	32.5	35.8	40.0	38.3	36.4
Jul	27.0	30.2	25.7	26.4	28.1	28.4	30.9	31.9	31.4	31.5
Aug	26.5	28.7	25.5	26.4	27.1	27.4	29.6	30.4	30.0	30.2
Sep	26.2	29.8	24.8	25.7	26.6	27.0	29.5	31.7	31.1	30.3
Oct	26.1	34.8	22.1	23.7	27.9	28.8	32.5	39.6	37.3	34.0
Nov	23.2	33.8	19.1	21.8	26.7	28.4	32.3	38.2	35.8	33.2
Dec	17.0	30.1	13.5	18.4	21.8	23.4	27.8	33.4	30.8	28.7
Mean	23.6	32.6	20.6	22.7	26.8	27.8	31.3	36.4	34.5	32.1
S.D.	5.1	3.5	5.5	3.5	3.9	3.8	3.7	4.9	4.6	3.7
C.V.%	21.5	10.9	26.5	15.3	14.4	13.5	11.8	13.6	13.3	11.6
Highest	29.3	38.5	26.5	26.6	32.4	33.6	37.2	44.3	42.1	38.0
Lowest	13.4	28.2	10.9	16.9	19.5	20.6	24.8	30.4	28.1	25.5

Table-4 Seasonal weather condition during - 2011-12

Week No	Air Temp. (⁰ C)		Soil Temperature (⁰ C)					RF	Rainy	RH (%)		W.S.	BSS	Eo.	
	Max	Min	5(I)	10(I)	20(I)	5(II)	10(II)	20(II)	(mm)	Days	I	II	(kmph)	(hrs)	(mm)
(A) WINTER SEASON 2010-11															
49-Dec-10	33.6	17.1	25.3	26.8	30.9	37.0	34.1	31.8			78	36	3.1	9.3	4.9
50	30.9	12.9	21.0	22.9	27.3	32.4	30.8	28.8			55	22	4.2	9.3	5.0
51	30.6	12.5	20.7	22.3	27.0	32.4	29.5	27.6			66	26	4.4	8.4	4.8
52	28.5	10.8	18.9	20.5	25.1	30.6	27.6	26.0			58	24	4.8	8.5	4.7
1-J-11	27.6	9.7	18.0	19.2	23.6	29.5	27.0	25.1			73	28	3.4	8.3	3.7
2	28.7	9.7	18.5	19.6	24.2	30.2	27.5	24.8			73	27	3.4	9.0	3.7
3	28.6	10.4	19.3	20.5	24.9	30.7	28.1	25.4			79	24	3.6	9.2	4.0
4	29.6	14.2	21.1	22.4	25.8	31.7	29.3	26.5			70	26	5.3	9.5	5.5
5	30.4	14.3	21.8	23.2	26.6	32.8	30.2	27.1			74	31	4.4	9.5	5.2
6-F	30.5	14.1	22.7	24.3	27.0	31.1	31.3	28.4			82	37	3.8	9.3	4.5
7	30.3	15.8	22.9	24.3	27.0	33.9	31.5	28.3			76	36	4.5	9.1	4.6
8	30.1	14.3	22.9	24.3	28.2	35.0	32.1	28.8			64	25	5.2	9.8	6.0
9	33.5	16.0	24.4	25.7	29.7	37.5	34.1	30.5			60	23	4.4	10.0	6.7
Total	392.9	171.7	277.5	295.9	347.4	424.8	393.0	359.1			908.9	364.3	54.4	119.1	63.4
Mean	30.2	13.2	21.3	22.8	26.7	32.7	30.2	27.6			69.9	28.0	4.2	9.2	4.9
SD	1.8	2.5	2.3	2.3	2.1	2.5	2.4	2.1			8.6	5.2	0.7	0.5	0.9
CV	5.9	18.7	10.6	10.3	7.7	7.7	7.9	7.6			12.3	18.7	16.5	5.7	17.9
(B) SUMMER SEASON 2011															
10-M	34.3	18.4	25.7	26.9	30.9	37.5	35.6	31.7			52.9	19.1	5.6	10.1	7.7
11	38.4	17.2	26.2	27.7	31.9	40.2	37.3	33.0			47.9	15.9	4.6	10.4	7.9
12	36.6	19.2	27.6	28.9	33.1	39.7	37.7	33.7			84.0	25.6	5.4	10.3	7.9
13	38.5	20.6	27.9	29.3	33.8	41.6	39.1	34.7			59.3	14.7	5.7	10.2	9.3
14-A	37.5	21.7	27.9	29.4	33.8	41.3	38.9	34.7			49.6	10.9	6.1	9.9	9.2
15	39.2	23.3	30.2	31.7	35.3	42.8	40.7	36.1			66.7	20.4	5.9	9.4	9.4
16	39.6	23.2	30.9	32.4	36.3	44.2	42.1	37.1			73.3	16.1	5.9	9.8	9.7
17	40.6	23.8	31.0	32.7	35.9	43.9	42.2	37.9			72.6	19.3	7.0	10.6	10.3
18	37.8	24.8	31.7	33.0	37.0	43.4	41.9	37.7			81.3	35.0	8.2	10.2	9.0
19-M	37.8	25.5	32.2	33.4	37.2	44.0	42.3	37.8			81	36	9.1	9.6	9.0
20	38.6	26.0	32.5	33.9	37.2	44.3	42.5	38.3			85	34	8.5	10.2	9.0
21	36.8	26.8	32.4	33.6	36.8	45.1	41.3	37.7			80	43	12.6	7.9	8.6
22	38.6	27.0	33.5	34.6	37.9	44.5	42.5	38.6			78	45	9.7	9.0	9.4
Total	494.2	297.7	390.0	407.7	457.1	552.5	524.0	468.8			910.6	333.9	94.4	127.6	116.4
Mean	38.0	22.9	30.0	31.4	35.2	42.5	40.3	36.1			70.0	25.7	7.3	9.8	9.0
SD	1.6	3.2	2.6	2.6	2.2	2.3	2.3	2.3			13.4	11.3	2.2	0.7	0.7
CV	4.1	14.1	8.6	8.2	6.4	5.3	5.8	6.3			19.1	44.1	30.9	7.4	8.2

Week No	Air Temp. (°C)		Soil Temperature (°C)					RF	Rainy	RH (%)		W.S.	BSS	Eo.	
	Max	Min	5(I)	10(I)	20(I)	5(II)	10(II)	20(II)	(mm)	Days	I	II	(kmph)	(hrs)	(mm)
(C) MONSOON SEASON 2011															
23-J	39.9	27.4	33.1	33.9	37.5	44.6	42.3	38.0	2.2		79.1	39.7	7.4	3.2	6.4
24	35.2	25.8	30.6	31.2	35.2	39.4	37.0	36.0	35.3	2	85.0	60.3	7.9	3.3	5.6
25	34.9	27.5	31.2	32.1	34.9	37.6	36.4	35.6			77.9	54.7	14.9	0.1	7.4
26	34.5	27.0	30.8	31.4	34.4	36.3	35.3	34.8			78.3	54.6	15.7	0.0	6.5
27-J	34.2	25.1	29.3	29.7	33.0	35.9	35.2	33.6	32.4	4	85.1	58.7	8.7	0.2	5.0
28	30.5	24.8	27.5	27.8	29.6	29.7	29.6	30.6	38.9	2	91.0	78.0	7.2	0.0	2.8
29	32.0	25.5	27.9	28.2	30.8	30.7	30.2	31.1	67.8	2	89.6	72.6	7.7	0.5	3.0
30	31.4	25.4	27.7	28.0	30.4	31.6	31.1	30.9	130.9	4	94.9	82.3	6.2	0.9	3.0
31	29.9	24.6	27.2	27.3	29.4	30.6	30.0	30.1	194.1	6	95.1	88.1	5.0	0.9	2.0
32-A	30.8	26.3	27.3	27.7	30.1	29.9	30.0	30.4	25.7	2	90.9	81.3	11.1	0.6	3.0
33	29.9	25.2	27.0	27.4	29.4	29.9	29.6	30.0	38.8	3	91.3	82.0	6.7	0.7	2.1
34	30.2	24.6	27.0	27.4	29.7	30.4	30.2	30.3	87.4	6	92.3	86.4	3.2	0.6	1.9
35	30.9	24.7	26.9	27.1	29.5	31.5	30.7	30.3	69.8	4	90.1	78.9	5.7	1.8	2.8
36-S	30.3	25.1	27.3	27.5	29.8	30.1	29.9	30.2	168.8	5	92.4	83.4	08.5	1.7	2.4
37	30.0	24.8	26.8	27.0	29.0	29.9	29.5	29.5	34.4	3	92.7	82.4	5.4	1.6	1.8
38	30.6	23.7	26.3	26.9	29.4	32.7	31.7	30.4	30.4	1	87.1	64.9	5.1	6.9	3.5
39	32.3	22.8	25.8	26.4	29.7	33.8	32.7	30.7	5.8		84.3	57.9	3.4	7.6	3.9
Total	547.4	430.3	479.7	487.1	531.8	564.6	551.4	542.3	962.7	45	1497.1	1206.1	129.7	30.4	63.0
Mean	32.2	25.3	28.2	28.7	31.3	33.2	32.4	31.9	64.2	3.4	88.1	70.9	7.6	1.8	3.7
SD	2.7	1.2	2.0	2.2	2.6	4.2	3.6	2.6	57.8	1.6	5.6	14.3	3.5	2.3	1.8
CV	8.4	4.8	7.2	7.7	8.4	12.7	11.1	8.2	90.0	47.5	6.4	20.2	45.7	127.5	48.5

(D) POST MONSOON SEASON 2011

40-O	33.3	23.4	26.1	26.9	30.2	36.6	34.7	32.0			75.1	50.3	4.2	13.6	4.7
41	35.4	25.5	28.5	29.1	32.7	40.5	38.3	34.0			65.6	36.7	5.4	9.1	5.9
42	36.5	24.1	29.4	30.3	33.9	41.0	38.7	35.3			70.4	35.9	2.9	7.0	5.2
43	35.9	19.0	27.1	28.3	32.8	40.5	37.6	34.3			68.6	28.1	2.8	9.6	5.2
44	35.7	22.8	27.5	29.9	33.4	38.7	36.8	34.7			64.0	31.0	3.1	6.4	5.2
45-N	36.0	21.1	28.5	29.6	33.6	39.8	37.5	34.5			71.0	30.7	2.4	9.2	4.7
46	34.8	19.4	27.1	28.7	32.6	39.0	36.3	33.7			71.6	29.7	3.5	9.5	5.4
47	34.4	16.6	25.1	26.9	30.9	37.7	34.9	32.0			66.3	27.1	2.7	9.5	5.1
48	33.3	21.3	26.5	27.6	31.4	35.9	33.6	31.6			63.6	38.3	4.2	4.8	4.6
Total	315.4	193.3	245.7	257.3	291.7	349.7	328.6	302.1			616.1	307.9	31.2	78.7	46.1
Mean	35.0	21.5	27.3	28.6	32.4	38.9	36.5	33.6			68.5	34.2	3.5	8.7	5.1
S.D.	1.2	2.8	1.3	1.3	1.3	1.8	1.7	1.4			3.9	7.2	1.0	2.5	0.4
C.V.%	3.3	13.1	4.9	4.4	3.9	4.7	4.8	4.0			5.7	21.0	27.5	28.5	8.3

Table-5:- Frequency of Cloudy days, rainy days and amount of rainfall at Junagadh (1985-2011)

Year	Cloudy day					Rainy days					Rainfall				
	June	July	Aug.	Sept.	Total	June	July	Aug.	Sept.	Total	June	July	Aug.	Sept.	Total
1985	7	26	17	0	50	0	17	13	5	35	2.5	168.2	112.8	34.5	318
1986	13	21	14	2	50	11	2	8	3	24	536	31	158.8	19.4	745
1987	1	4	12	1	18	4	2	3	2	11	42.2	30.6	57.6	7.8	138
1988	9	25	16	4	54	1	25	14	11	51	19.7	1056.4	121.9	192.7	1391
1989	11	15	19	0	45	6	17	7	6	36	298.6	305.7	46.5	123.8	775
1990	10	27	20	4	61	3	5	14	10	32	33.4	55.2	473.4	104.1	666
1991	5	22	18	8	53	3	12	12	3	30	16	385.4	81.3	26.3	509
1992	7	13	13	9	42	2	10	11	8	31	26	341.3	195.5	267.5	830
1993	9	18	7	4	38	8	8	0	3	19	169.6	128.4	3.7	64.2	366
1994	15	28	28	10	81	7	20	15	6	48	132.5	748.4	150.9	155.5	1187
1995	3	18	4	2	27	3	17	12	4	36	15.7	607.1	105.5	82.6	811
1996	4	16	22	8	50	5	15	9	1	30	317.5	324.8	63.9	10.6	717
1997	11	22	19	6	58	9	10	10	7	36	231.7	267.8	96.4	217.3	813
1998	3	18	19	3	43	7	12	12	4	35	156.1	378.6	271.6	78.9	885
1999	6	23	20	1	50	4	14	6	2	26	81.6	219.9	37.5	27.2	366
2000	0	18	16	5	39	2	10	12	1	25	21.4	309.4	192.7	8.5	532
2001	4	26	15	3	48	4	18	15	4	41	276.2	224.3	200.3	106.8	808
2002	5	19	25	4	53	5	7	7	2	21	275.9	45.7	119.8	94.8	536
2003	11	18	18	10	57	4	18	15	4	41	175.3	546.5	458.3	60.9	1241
2004	9	12	25	2	48	7	10	18	6	41	151.6	201.2	475.7	95.2	924
2005	12	26	27	15	80	10	10	8	12	40	381.5	114	164.3	532.9	1193
2006	6	28	28	3	65	6	18	19	8	51	76.5	574	299.2	136.3	1086
2007	9	25	23	7	64	8	8	18	13	47	164.1	336.9	679.4	231	1411
2008	19	27	24	11	81	4	15	14	8	41	148.7	436.1	110.8	508.8	1204
2009	8	22	17	2	49	7	20	3	1	31	101.5	660.6	52.7	10.4	825
2010	3	21	21	15	60	6	23	21	14	64	225.9	508.4	501.9	321.8	1558
2011	19	29	27	11	86	2	15	19	9	45	37.5	341.7	341.7	241.8	963
Mean	8.1	21.0	19.0	5.6	53.7	5.1	13.3	11.7	5.8	35.9	152.4	346.2	201.2	139.3	844.4
SD	4.9	5.9	6.0	4.3	15.8	2.8	5.9	5.3	3.8	11.3	132.3	242.6	175.5	140.4	358.4
CV	60	28	32	78	29	54	45	45	66	32	87	70	87	101	42

Table-6 Number of hot days (>40 °C) during Summer months				
Year	March	April	May	Total
1984	0	14	10	24
1985	12	8	13	33
1986	4	14	8	26
1987	1	9	18	28
1988	0	19	15	34
1989	0	15	15	30
1990	0	9	4	13
1991	6	10	9	25
1992	0	5	14	19
1993	0	10	9	19
1994	10	3	14	27
1995	0	8	14	22
1996	4	8	10	22
1997	0	3	5	8
1998	6	12	16	34
1999	4	14	1	19
2000	5	15	1	21
2001	0	16	5	21
2002	6	17	6	29
2003	3	15	12	30
2004	12	6	8	26
2005	0	16	6	22
2006	0	1	6	7
2007	3	19	4	26
2008	0	9	1	10
2009	1	19	8	28
2010	9	23	20	52
2011	6	9	4	19
Total	92	326	256	674
Mean	3.3	11.6	9.1	24.1
SD	3.8	5.3	5.1	8.2
CV %	116	46	55	34

Year	Nov.	Dec.	Jan.	Feb.	Total
1987	0	3	8	1	12
1988	2	9	3	0	14
1989	0	8	16	5	29
1990	0	10	17	0	27
1991	0	10	18	3	31
1992	0	6	14	5	25
1993	1	12	8	8	29
1994	0	10	10	6	26
1995	0	4	18	5	27
1996	1	10	7	5	23
1997	0	9	15	11	35
1998	0	12	14	1	27
1999	0	18	10	5	33
2000	0	2	8	1	11
2001	0	0	5	1	6
2002	0	0	8	3	11
2003	0	7	1	0	8
2004	0	0	6	1	7
2005	0	11	8	3	22
2006	0	0	4	0	4
2007	0	1	8	0	9
2008	0	0	13	9	22
2009	0	0	1	2	3
2010	0	10	12	0	22
2011	0	5			5
Total	4	157	232	75	441
Mean	0.16	6.28	9.67	3.13	18.72
SD	0.463	4.952	5.006	3.086	10.054
Cv%	289.40	78.85	51.78	98.77	53.71

Table-8 Mean minimum and lowest minimum temperature during winter season at Junagadh

Year	December			January			February		
	Mean	Lowest	Date	Mean	Lowest	Date	Mean	Lowest	Date
1987	12.8	9.1	23	13.5	7.1	23			
1988	11.2	5.6	29	12.3	6.1	26	16.1	12.1	05
1989	11.9	5.8	28	9.2	2.6	12	13.1	7.1	03
1990	12.7	5.6	31	10.3	6.2	03	15.8	10.0	16
1991	10.7	5.1	31	9.7	2.5	03	13.5	3.2	18
1992	12.2	7.5	29	10.2	3.5	12	13.0	6.9	15
1993	10.7	6.0	21	12.2	6.4	30	13.1	6.4	20
1994	11.5	4.0	12	11.5	5.0	16	13.3	7.5	23
1995	12.7	7.7	03	9.8	5.4	15	12.6	7.0	25
1996	11.8	4.9	11	12.0	5.5	19	13.7	5.8	01
1997	12.1	7.6	15	11.0	4.7	16	11.9	6.7	11
1998	10.9	7.5	30	10.5	4.5	18	13.5	9.5	08
1999	10.3	7.5	13	10.5	5.3	11	14.0	8.5	01
2000	13.2	9.8	26	12.7	8.5	16	15.9	9.1	13
2001	13.5	10.7	24	12.6	6.6	25	15.5	9.6	03
2002	14.9	12.0	05	12.5	7.6	28	16.0	7.0	12
2003	12.7	8.4	18	14.2	8.3	01	16.2	10.5	03
2004	15.0	10.5	26	12.3	7.9	27	14.5	7.9	07
2005	11.7	8.2	25	11.4	7.4	19	14.1	5.5	20
2006	13.7	10.2	13	12.5	8.0	04	16.5	13.3	01
2007	15.2	7.6	30	12.2	7.4	14	16.9	13.1	02
2008	16.2	10.3	28	11.3	7.3	22	12.0	5.5	08
2009	14.7	10.6	31	14.0	8.0	02	15.3	9.4	02
2010	11.9	7.4	11	11.4	5.2	17	14.6	11.0	01

Table-9 Mean Maximum and highest maximum temperature during summer season at Junagadh

Year	March			April			May		
	Mean	Highest	Date	Mean	Highest	Date	Mean	Highest	Date
1984	36.5	38.6	12	41.2	43.5	14	39.2	42.8	06
1985	39.1	40.8	09	38.7	42.3	24	39.9	44.3	18
1986	37.4	41.8	29	39.7	43.6	07	38.9	43.2	21
1987	36.8	41.4	25	39.4	44.9	20	39.6	43.4	25
1988	36.3	39.8	17	40.6	43.9	13	40.0	45.4	09
1989	35.2	38.9	31	39.7	43.9	21	39.8	43.4	13
1990	34.5	38.7	21	39.1	43.0	25	38.1	42.2	10
1991	36.3	43.7	30	38.7	43.0	01	38.2	42.6	31
1992	35.8	39.2	24	38.3	43.1	28	39.6	43.7	14
1993	35.0	39.2	21	38.9	43.0	26	39.1	42.7	13
1994	39.0	44.2	18	38.2	40.2	28	39.8	43.2	16
1995	33.4	39.7	24	38.3	41.1	30	40.0	45.0	30
1996	37.8	41.2	12	39.0	42.3	16	38.6	43.9	08
1997	34.4	38.6	29	36.6	41.8	25	38.2	43.8	17
1998	36.1	41.7	29	39.2	43.7	06	40.5	44.8	17
1999	36.3	43.0	31	39.8	43.5	06	36.4	40.6	17
2000	35.5	41.3	30	39.5	42.1	09	36.1	40.0	06
2001	35.4	38.3	20	39.6	42.6	26	37.8	42.5	03
2002	37.5	42.4	20	40.4	44.3	29	39.1	46.0	05
2003	36.9	41.2	26	39.8	43.2	23	39.5	43.8	12
2004	39.0	42.7	17	38.5	42.0	26	37.8	45.2	07
2005	35.6	39.0	15	39.9	43.5	06	38.7	41.4	25
2006	35.0	40.0	31	38.4	42.0	16	38.5	43.0	08
2007	35.9	41.7	31	39.9	42.8	07	38.1	42.8	03
2008	36.9	39.5	24	38.6	43.6	28	37.1	41.0	28
2009	37.5	40.2	31	40.6	45.0	30	38.8	43.1	01
2010	38.3	43.8	20	40.9	43.6	17	41.2	44.5	21
2011	36.6	41.6	18	39.1	41.5	24	37.9	40.5	30

Table -10 Decadal Rainfall at Junagadh (1961-2010)								
Year	June	July	Aug	Sep	Total	Oct	Nov	Total
	Monsoon					Post monsoon		
1961	211.6	817.7	158.8	176.1	1364.2	30.6	0	30.6
1962	26.6	228	163.4	135.6	553.6	0	46.5	46.5
1963	107	132.6	193.4	47.6	480.6	68	42.6	110.6
1964	241.1	290.7	628.7	212.8	1373.3	0	0	0
1965	3.1	380.9	182.1	1.6	567.7	2.5	13	15.5
1966	160.5	190	11.7	100.7	462.9	7.4	0	7.4
1967	230.8	542.6	87.3	29	889.7	0	0	0
1968	21.8	256.9	331.4	90.8	700.9	11.8	0	11.8
1969	62.2	441.4	79.8	10.2	593.6	0	10	10
1970	9.3	309.7	511.8	137.1	967.9	15.4	0	15.4
Mean	107	359	235	94	795	14	11	25
1971	185	258.6	257.6	294.7	995.9	0	0	0
1972	190.4	98.7	2	0	291.1	19.2	0	19.2
1973	144.2	514.6	154.5	95.9	909.2	0	0	0
1974	148.6	66.2	111.3	68.2	394.3	31.2	0	31.2
1975	188.1	149.1	156.1	131.4	624.7	182.5	0	182.5
1976	115	432.1	144.4	131.3	822.8	10.4	57.5	67.9
1977	142.1	400.1	106	187.2	835.4	0	7.6	7.6
1978	172.7	229.1	181.4	88.9	672.1	4.6	27.1	31.7
1979	335.1	42.4	787.3	124.3	1289.1	46.6	83.8	130.4
1980	969.4	532.6	104.9	60.8	1667.7	0	0	0
Mean	259	272	201	118	850	29	18	47
1981	12	648.4	244	88	992.4	88	53	141
1982	2.3	341.5	281.5	23	648.3	0	235	235
1983	1432.2	707.6	373.8	263	2776.6	14	0	14
1984	166	381.5	185.5	298	1031	0	0	0
1985	2.5	168.2	112.8	34.5	318	23.5	0	23.5
1986	536	31	158.8	19	744.8	0	0	0
1987	42.2	30.6	57.6	7.8	138.2	0	1.4	1.4
1988	19.7	1056.4	121.9	192.7	1390.7	0	0	0
1989	298.6	305.7	46.5	123.8	774.6	33.2	0	33.2
1990	33.4	55.2	473.4	104.1	666.1	184.8	1.2	186
Mean	254	373	206	115	948	34	29	63
1991	16	285.4	81.3	26.3	409	0	0	0
1992	26	341.3	195.5	267.5	830.3	110.8	0	110.8
1993	169.6	128.4	3.7	64.2	365.9	157.8	3	160.8
1994	132.5	748.4	150.9	155.5	1187.3	0	0	0
1995	15.7	607.1	105.5	82.6	810.9	45.5	0	45.5
1996	317.5	324.8	63.9	10.6	716.8	26.2	0	26.2
1997	231.7	267.8	96.4	217.3	813.2	39.3	0	39.3
1998	156.1	378.6	271.6	28.9	835.2	123.7	88.5	212.2
1999	81.6	219.9	37.5	22.2	361.2	33.3	0	33.3
2000	21.4	309.4	192.7	8.5	532	19	0	19
Mean	117	361	120	88	686	56	9	65
2001	276.2	224.3	200.3	106.8	807.6	16.4	0	16.4
2002	275.8	45.7	119.8	94.8	536.1	0	0	0
2003	175.3	546.5	458.3	60.9	1241	33.5	0	33.5
2004	151.6	201.2	475.7	95.2	923.7	47.1	0	47.1
2005	318.5	114	164.3	532.9	1129.7	4.6	0	4.6
2006	76.4	574	299.2	136.3	1085.9	0	0	0
2007	164.1	336.9	679.4	231	1411.4	0	0	0
2008	148.7	436.1	110.8	508.8	1204.4	2.8	1.8	4.6
2009	101.5	660.6	52.7	10.4	825.2	0	0	0
2010	225.9	508.4	501.9	321.8	1558	55.2	76.2	131.4
Mean	191	365	306	210	1072	16	8	24

APPENDIX-1

Daily Weather Data

January-2011													
Date	Temperature c°				RH. %			Wind Direction		W.S.	B.S.S	EVAPO.	Rainfall
	Max	Min	Mean	Range	I	II	Mean	I	II	(kmph)	(hrs)	(mm)	(mm)
1	25.0	7.2	16.1	17.8	80	21	51	00	05	3.2	9.0	03.4	000.0
2	26.0	7.8	16.9	18.2	72	23	48	02	02	2.7	9.2	03.4	000.0
3	27.2	8.3	17.8	18.9	74	34	54	00	05	3.2	9.1	03.5	000.0
4	28.5	12.5	20.5	16.0	56	35	46	00	05	3.5	7.7	03.7	000.0
5	29.5	12.8	21.2	16.7	75	31	53	18	02	3.7	5.8	03.7	000.0
6	28.0	9.0	18.5	19.0	87	27	57	00	05	5.1	7.9	05.2	000.0
7	29.0	10.0	19.5	19.0	69	25	47	36	36	2.6	9.3	03.3	000.0
8	29.0	9.0	19.0	20.0	82	22	52	00	36	3.4	9.2	04.0	000.0
9	28.5	10.0	19.3	18.5	47	18	33	14	09	4.5	9.0	04.2	000.0
10	29.0	8.4	18.7	20.6	60	23	42	11	36	4.0	9.3	04.2	000.0
11	28.6	8.0	18.3	20.6	79	24	52	00	36	2.9	9.3	03.8	000.0
12	28.5	9.5	19.0	19.0	80	26	53	02	02	3.0	9.3	03.6	000.0
13	29.6	9.7	19.7	19.9	98	37	68	36	36	2.2	9.2	03.0	000.0
14	27.7	13.0	20.4	14.7	64	40	52	36	36	3.8	8.0	02.8	000.0
15	28.0	16.5	22.3	11.5	65	18	42	02	02	04.3	08.5	03.6	000.0
16	26.2	7.2	16.7	19.0	68	19	44	00	18	06.1	09.2	05.2	000.0
17	28.2	5.2	16.7	23.0	82	15	49	00	36	02.7	09.3	03.2	000.0
18	29.0	10.5	19.8	18.5	69	48	59	36	36	02.8	09.5	04.6	000.0
19	29.0	12.3	20.7	16.7	93	24	59	00	02	03.6	09.1	03.3	000.0
20	29.5	10.5	20.0	19.0	95	22	59	00	36	03.1	09.2	03.6	000.0
21	30.6	10.6	20.6	20.0	78	20	49	36	36	02.9	09.6	04.2	000.0
22	31.2	11.4	21.3	19.8	74	24	49	00	36	04.0	09.7	04.6	000.0
23	31.5	12.5	22.0	19.0	78	27	53	00	36	03.4	09.4	04.5	000.0
24	30.0	12.7	21.4	17.3	82	29	56	18	34	03.6	09.1	04.6	000.0
25	30.2	16.5	23.4	13.7	61	24	43	18	36	0.4.2	09.3	04.8	000.0
26	29.0	18.0	23.5	11.0	45	14	30	18	36	07.2	09.4	07.2	000.0
27	27.0	18.0	22.5	9.0	70	32	51	00	05	07.4	10.0	07.0	000.0
28	28.6	10.5	19.6	18.1	83	30	57	18	34	06.3	09.5	05.9	000.0
29	28.2	9.6	18.9	18.6	79	28	54	00	36	04.8	09.5	05.5	000.0
30	28.4	18.0	23.2	10.4	88	38	63	36	36	04.8	09.7	05.2	000.0
31	29.2	18.3	23.8	10.9	34	26	30	05	36	06.0	08.3	06.0	000.0
Total	887.9	353.5	620.7	534.4	2267.0	824.0	1545.5			120.8	279.6	134.8	0.0
Mean	28.6	11.4	20.0	17.2	73.1	26.6	49.9			4.0	9.0	4.3	0.0
S.D.	1.4	3.6	2.1	3.5	14.5	7.6	8.7			1.4	0.8	1.1	0.0
C.V.%	4.9	31.4	10.5	20.1	19.8	28.7	17.5			34.3	8.8	25.7	0.0
High.	31.5	18.0	23.5	23.0	98.0	48.0	67.5			7.4	10.0	7.2	0.0
Low.	25.0	5.2	16.1	9.0	45.0	14.0	29.5			2.2	5.8	2.8	0.0
Mode	29.0	7.2	19.0	19.0	82.0	24.0	58.5			3.2	9.3	4.2	0.0

January-2011												
Date	D.B.		W.B.		V.P.		Soil Temperature					
	I	II	I	II	I	II	5(I)	10(I)	20(I)	5(II)	10(II)	20(II)
1	9.6	25.5	8.0	14.0	7.1	5.0	16.5	18.2	23.2	27.6	25.6	28.6
2	9.8	26.5	7.6	15.0	6.7	5.9	16.8	17.7	22.8	29.5	26.6	24.0
3	10.5	28.0	8.5	18.2	6.0	9.7	17.0	18.0	23.0	28.8	26.2	24.0
4	15.0	28.7	10.8	19.0	7.2	10.6	19.2	20.4	23.8	30.5	27.8	24.6
5	14.5	27.6	12.2	17.2	9.3	8.4	20.0	21.0	24.4	29.5	27.5	25.2
6	11.4	28.2	10.3	17.0	8.7	7.7	18.5	19.6	24.2	30.2	27.5	24.8
7	12.0	28.7	9.4	17.0	7.3	7.5	18.0	19.5	24.0	30.5	27.6	24.7
8	11.5	28.0	10.0	16.0	8.3	6.3	18.0	19.2	24.2	30.0	27.5	24.6
9	14.0	28.6	9.4	15.5	5.8	5.3	19.6	20.2	24.0	30.5	27.5	24.9
10	11.4	28.5	8.0	16.5	6.0	6.7	18.2	19.2	24.2	30.2	27.6	24.8
11	10.0	28.0	8.4	16.4	7.3	7.0	17.2	18.6	23.8	30.0	27.0	24.6
12	11.0	28.8	9.4	17.2	7.9	7.7	18.2	19.6	24.0	30.5	27.6	24.6
13	14.2	27.0	14.0	18.0	11.8	10.0	18.5	19.6	24.7	30.0	27.5	24.6
14	19.6	27.0	15.6	18.4	10.9	10.7	19.8	20.6	24.6	30.5	28.0	25.4
15	18.0	25.6	14.4	14.2	10.1	04.0	21.2	22.0	25.4	30.5	28.2	25.8
16	10.4	27.4	7.8	15.0	06.4	05.3	18.2	19.8	24.6	30.5	28.0	25.2
17	8.5	28.2	7.0	14.6	06.8	04.3	17.4	19.2	24.6	30.5	27.6	24.5
18	12.0	27.8	9.4	20.4	07.3	14.2	18.8	20.0	24.5	29.5	27.0	25.7
19	13.6	29.0	13.0	17.0	10.9	07.3	20.5	21.2	25.0	31.0	28.6	25.6
20	10.8	29.6	10.4	17.0	09.2	06.2	19.5	20.6	25.0	31.6	28.7	25.5
21	12.5	30.4	10.6	17.0	08.4	06.4	19.6	20.5	25.0	31.2	28.6	25.5
22	13.5	30.0	11.2	17.6	09.2	07.6	20.6	21.6	25.6	32.5	29.7	26.6
23	14.6	29.6	12.6	18.1	09.7	07.8	21.2	22.5	26.0	31.7	29.5	26.8
24	14.6	30.5	13.0	19.0	10.2	09.5	21.5	22.6	26.1	32.0	29.5	26.8
25	18.6	28.5	14.4	16.6	09.8	07.0	22.5	23.6	26.5	32.4	30.0	27.5
26	19.0	26.5	12.8	13.5	07.4	03.6	21.5	23.0	25.5	31.0	29.0	24.5
27	10.0	28.2	7.7	18.0	06.6	09.3	20.0	21.5	25.6	31.2	28.7	26.4
28	11.8	27.8	10.4	17.2	08.6	08.3	20.6	22.2	25.6	30.8	28.6	26.6
29	11.6	27.7	9.8	16.8	08.0	07.7	20.0	21.6	25.6	31.2	28.6	26.4
30	19.2	28.5	18.0	19.4	14.7	11.3	22.6	23.5	26.4	31.0	29.5	25.0
31	21.5	28.4	13.2	17.4	06.6	07.6	22.1	23.2	26.6	32.5	30.0	27.2
Total	414.7	872.8	337.3	524.2	260.2	235.9	603.3	640.0	768.5	949.4	871.3	791.0
Mean	13.4	28.2	10.9	16.9	8.4	7.6	19.5	20.6	24.8	30.6	28.1	25.5
S.D.	3.4	1.2	2.7	1.6	2.0	2.3	1.7	1.6	1.0	1.1	1.1	1.1
C.V.%	25.6	4.3	24.6	9.6	23.6	30.4	8.8	8.0	4.1	3.5	3.9	4.4
Highest	21.5	30.5	18.0	20.4	14.7	14.2	22.6	23.6	26.6	32.5	30.0	28.6
Lowest	8.5	25.5	7.0	13.5	5.8	3.6	16.5	17.7	22.8	27.6	25.6	24.0

February-2011													
Date	Temperature c°				RH. %			Wind Direction		W.S.	B.S. S	EVAP O	Rainfa II
	Max	Min	Mea n	Rang e	I	II	Mea n	I	II	(kmp h)	(hrs)	(mm)	(mm)
1	30.8	11.0	20.9	19.8	86	26	56	18	36	05.5	09.8	05.9	000.0
2	31.2	12.4	21.8	18.8	77	37	57	00	36	04.1	09.7	04.7	000.0
3	31.5	15.0	23.3	16.5	80	29	55	00	34	02.6	09.8	04.0	000.0
4	33.5	15.8	24.7	17.7	77	30	54	00	34	02.8	09.4	05.4	000.0
5	32.8	13.0	22.9	19.8	80	43	62	14	02	03.1	09.2	04.8	000.0
6	30.5	12.5	21.5	18.0	83	37	60	00	36	05.3	09.5	04.8	000.0
7	30.4	18.0	24.2	12.4	93	47	70	36	05	03.5	09.7	03.9	000.0
8	30.5	17.5	24.0	13.0	91	44	68	02	02	04.2	09.3	04.4	000.0
9	28.0	12.5	20.3	15.5	84	31	58	29	29	03.8	08.3	04.7	000.0
10	30.2	11.5	20.9	18.7	68	31	50	00	36	03.7	09.4	04.3	000.0
11	31.0	13.4	22.2	17.6	78	25	52	23	27	02.9	09.7	04.7	000.0
12	33.5	13.5	23.5	20.0	57	24	41	02	27	03.3	09.7	03.8	000.0
13	32.5	18.5	25.5	14.0	76	43	60	05	34	04.2	09.4	05.1	000.0
14	30.6	14.5	22.6	16.1	89	38	64	32	25	03.8	09.6	04.6	000.0
15	30.3	18.5	24.4	11.8	86	43	65	05	25	05.2	09.6	04.3	000.0
16	28.4	15.5	22.0	12.9	79	34	57	00	32	05.3	05.5	04.0	000.0
17	28.5	14.5	21.5	14.0	68	36	52	05	36	04.7	09.9	05.1	000.0
18	28.0	15.7	21.9	12.3	74	34	54	00	36	04.8	09.9	05.1	000.0
19	28.1	15.3	21.7	12.8	77	25	51	05	32	04.7	09.4	05.0	000.0
20	29.4	17.9	23.7	11.5	66	28	47	05	05	05.1	09.0	05.2	000.0
21	28.8	13.4	21.1	15.4	43	24	34	05	05	06.5	10.0	06.0	000.0
22	29.5	11.8	20.7	17.7	66	29	48	23	36	06.4	10.1	07.6	000.0
23	31.4	15.2	23.3	16.2	44	27	36	23	32	05.3	09.7	05.9	000.0
24	31.5	13.4	22.5	18.1	76	25	51	00	32	04.8	10.0	06.6	000.0
25	32.0	13.3	22.7	18.7	78	19	49	23	02	03.5	10.2	05.8	000.0
26	32.5	17.1	24.8	15.4	62	26	44	23	36	04.2	09.9	06.0	000.0
27	32.0	14.5	23.3	17.5	33	13	23	23	32	04.3	09.9	06.8	000.0
28	32.4	13.3	22.9	19.1	55	27	41	00	36	06.4	10.1	07.8	000.0
29													
Total	859.8	408.5	634.2	451.3	2026.0	875.0	1450.5			124.0	265.7	146.3	0.0
Mean	30.7	14.6	21.9	15.6	72.4	31.3	50.0			4.4	9.5	5.2	
S.D.	1.7	2.2	4.4	4.0	14.9	8.1	14.1			1.1	0.9	1.1	
C.V. %	5.4	14.9	20.2	25.7	20.5	26.1	28.3			24.5	9.2	20.2	
High	33.5	18.5	25.5	20.0	93.0	47.0	70.0			6.5	10.2	7.8	
Low.	28.0	11.0	0.0	0.0	33.0	13.0	0.0			2.6	5.5	3.8	
Mod	31.5	13.4	23.3	17.7	77.0	43.0				5.3	9.7	4.7	

February-2011												
Date	D.B.		W.B.		V.P.(mmHg)		Soil Temperature					
	I	II	I	II	I	II	5(I)	10(I)	20(I)	5(II)	10(II)	20(II)
1	13.0	30.4	11.8	18.4	09.7	08.8	21.0	22.6	26.5	32.2	29.6	27.0
2	14.5	31.0	12.4	21.0	09.5	12.5	21.4	23.0	26.6	33.5	30.5	27.6
3	16.6	33.0	14.6	20.9	11.2	11.1	22.2	23.5	27.0	34.0	31.6	28.0
4	17.0	32.2	14.7	20.4	10.9	10.8	23.6	24.7	27.7	35.2	31.6	28.5
5	14.8	30.0	13.0	21.2	10.2	13.5	22.5	24.2	27.7	33.0	30.5	28.2
6	13.5	29.0	12.0	19.4	09.6	11.0	22.0	23.6	27.5	33.5	31.2	28.0
7	19.8	29.8	19.0	21.8	11.8	14.7	23.2	24.6	22.7	24.0	31.6	28.5
8	20.0	27.0	19.0	19.4	15.9	12.0	23.5	25.0	28.2	33.8	31.6	28.8
9	14.4	24.6	13.0	18.5	11.8	10.0	22.0	23.6	28.0	24.2	31.5	28.5
10	15.5	30.0	12.4	19.4	08.9	11.4	23.5	24.5	27.5	34.5	30.4	28.5
11	16.6	33.0	14.4	20.0	10.9	09.6	22.0	24.5	27.5	35.0	32.0	28.5
12	16.5	32.0	14.0	19.0	12.0	08.5	22.0	24.0	27.0	34.0	31.5	26.0
13	21.5	30.0	18.8	21.2	14.6	13.0	24.0	25.5	27.2	35.0	32.4	29.0
14	15.8	29.5	14.8	20.0	12.0	11.8	23.2	24.5	28.0	34.5	31.8	29.0
15	20.5	26.5	19.0	18.6	15.6	11.3	24.5	25.6	23.7	33.5	31.5	29.0
16	17.5	27.0	15.4	17.4	12.3	09.2	22.0	23.5	27.7	33.5	31.0	28.5
17	19.0	27.2	15.5	18.0	11.2	09.9	22.4	23.5	28.0	33.2	30.5	28.3
18	16.8	27.2	14.2	17.5	10.6	09.1	22.0	23.5	27.5	33.6	31.6	28.2
19	19.5	28.6	17.1	17.0	13.1	07.5	22.8	24.0	28.0	34.0	31.5	28.5
20	20.0	28.5	16.2	17.0	11.5	07.8	23.1	24.3	28.0	33.5	31.0	28.6
21	20.0	28.6	13.4	16.7	07.6	07.2	22.4	24.0	27.5	34.8	32.5	28.5
22	15.2	30.8	12.0	19.1	08.6	09.6	22.5	24.0	28.0	35.0	32.4	28.5
23	20.8	31.1	14.2	19.1	02.5	09.2	23.6	25.0	28.5	35.0	32.2	29.3
24	16.0	32.0	13.7	19.2	10.4	08.9	23.0	24.5	28.6	36.0	32.6	28.5
25	15.2	31.5	13.2	17.4	10.2	06.3	22.8	24.6	28.8	36.4	32.2	29.6
26	18.5	31.0	14.4	19.0	09.8	08.9	23.4	25.0	29.0	35.0	32.5	29.5
27	24.0	31.8	15.0	16.4	07.4	05.3	23.5	25.0	29.0	36.6	33.5	29.9
28	16.0	34.0	11.5	21.0	07.5	10.7	23.6	25.2	29.2	37.8	34.2	30.2
29												
Total	488.5	837.3	408.7	534.0	297.3	279.6	637.7	679.5	770.6	944.3	887.0	799.2
Mean	17.4	29.9	14.6	19.1	10.6	10.0	22.8	24.3	27.5	33.7	31.7	28.5
S.D.	2.7	2.3	2.3	1.5	2.7	2.2	0.8	0.7	1.4	3.0	1.0	0.8
C.V.%	15.5	7.6	15.4	8.0	25.1	21.7	3.6	3.1	5.1	8.8	3.0	2.9
Highest	24.0	34.0	19.0	21.8	15.9	14.7	24.5	25.6	29.2	37.8	34.2	30.2
Lowest	13.0	24.6	11.5	16.4	2.5	5.3	21.0	22.6	22.7	24.0	29.6	26.0

March-2011													
Date	Temperature c°				RH. %			Wind Direction		W.S.	B.S.S	EVAPO	Rainfall
	Max	Min	Mean	Range	I	II	Mean	I	II	(kmph)	(hrs.)	(mm)	(mm)
1	35.2	17.0	26.1	18.2	63	20	42	34	32	03.5	10.0	07.6	000.0
2	35.0	16.5	25.8	18.5	56	21	39	00	36	03.3	10.1	06.2	000.0
3	35.5	15.6	25.6	19.9	70	19	45	00	25	03.7	10.1	06.0	000.0
4	31.8	18.0	24.9	13.8	82	33	58	02	36	05.1	10.1	06.6	000.0
5	32.0	19.0	25.5	13.0	60	24	42	02	36	06.2	10.0	07.0	000.0
6	33.0	16.6	24.8	16.4	63	17	40	18	29	05.8	10.0	07.6	000.0
7	36.5	15.5	26.0	21.0	67	21	44	99	36	03.2	10.0	06.4	000.0
8	37.0	20.0	28.5	17.0	29	20	25	36	02	06.2	10.2	08.8	000.0
9	35.0	18.6	26.8	16.4	74	21	48	36	99	06.4	10.2	08.0	000.0
10	33.0	20.0	26.5	13.0	41	13	27	02	36	05.5	10.1	08.1	000.0
11	33.5	19.4	26.5	14.1	36	18	27	36	36	06.1	10.4	08.3	000.0
12	35.0	13.4	24.2	21.6	18	14	16	36	36	08.5	10.4	08.1	000.0
13	36.5	15.5	26.0	21.0	46	22	34	99	36	03.4	10.5	07.4	000.0
14	36.2	16.0	26.1	20.2	56	14	35	00	36	03.2	10.4	06.8	000.0
15	38.0	18.5	28.3	19.5	52	13	33	99	34	05.0	10.5	08.2	000.0
16	40.0	17.5	28.8	22.5	76	14	45	99	02	04.4	10.4	08.8	000.0
17	41.5	17.4	29.5	24.1	50	12	31	00	32	03.0	10.4	08.0	000.0
18	41.6	22.0	31.8	19.6	37	22	30	36	27	04.4	10.3	08.2	000.0
19	40.5	17.2	28.9	23.3	73	32	53	32	27	05.2	10.3	09.7	000.0
20	37.0	20.6	28.8	16.4	88	35	62	16	29	06.5	10.6	08.0	000.0
21	36.0	21.0	28.5	15.0	84	33	59	99	27	05.9	09.3	07.4	000.0
22	36.2	18.3	27.3	17.9	93	21	57	20	20	05.1	10.4	07.9	000.0
23	35.0	19.5	27.3	15.5	83	20	52	00	29	05.6	10.3	07.6	000.0
24	35.4	18.0	26.7	17.4	86	19	53	29	29	05.3	10.5	07.1	000.0
25	36.0	20.0	28.0	16.0	81	19	50	36	34	04.5	10.5	07.8	000.0
26	37.4	22.0	29.7	15.4	45	13	29	36	02	05.4	10.5	08.4	000.0
27	39.4	24.5	32.0	14.9	38	12	25	23	29	06.4	10.3	09.8	000.0
28	40.0	24.4	32.2	15.6	33	6	20	36	34	06.1	10.5	10.6	000.0
29	40.5	18.6	29.6	21.9	81	11	46	25	27	05.6	10.5	10.9	000.0
30	38.3	18.0	28.2	20.3	72	14	43	34	29	05.2	10.2	08.4	000.0
31	38.0	16.0	27.0	22.0	68	19	44	34	27	05.2	09.2	08.9	000.0
Total	1136.0	574.6	855.3	561.4	1901	592	1247			158.9	317.2	248.6	0.0
Mean	36.6	18.5	27.6	18.1	61.3	19.1	40.2			5.1	10.2	8.0	
S.D.	2.7	2.5	2.1	3.2	20.0	6.9	12.0			1.3	0.3	1.2	
C.V.%	7.3	13.7	7.5	17.4	32.6	36.1	30.0			24.4	3.1	14.4	
High.	41.6	24.5	32.2	24.1	93.0	35.0	61.5			8.5	10.6	10.9	
Low.	31.8	13.4	24.2	13.0	18.0	6.0	16.0			3.0	9.2	6.0	
Mode	35.0	18.0	26.1	16.4	63.0	21.0	27.0			5.2	10.5	7.6	

March-2011												
Date	D.B.		W.B.		V.P.(mmHg)		Soil Temperature					
	I	II	I	II	I	II	5(I)	10(I)	20(I)	5(II)	10(II)	20(II)
1	19.0	34.0	15.0	19.4	10.4	08.0	25.0	26.2	30.0	38.5	35.0	30.8
2	19.0	35.0	14.2	20.4	09.3	09.1	25.2	26.5	30.2	38.5	35.0	31.2
3	17.5	33.8	14.4	19.8	10.5	07.3	24.5	26.0	30.2	38.6	34.6	31.0
4	21.0	31.5	19.0	20.6	15.3	11.5	25.3	26.0	30.2	37.5	34.2	31.0
5	22.6	32.2	17.8	19.2	12.4	08.8	25.6	27.0	30.5	32.6	34.2	31.0
6	20.0	36.0	16.0	20.0	11.2	07.8	26.0	27.0	30.6	38.0	36.4	31.8
7	18.0	36.1	14.6	21.0	10.4	09.4	25.5	26.6	31.0	39.0	35.6	31.8
8	25.0	33.6	15.2	19.2	07.0	07.9	26.6	27.7	31.6	38.5	35.5	32.0
9	22.0	32.0	19.0	18.4	14.6	07.5	26.0	27.5	31.1	38.0	35.5	32.2
10	22.6	32.7	15.2	16.8	08.5	06.1	25.5	26.6	31.0	38.2	35.5	31.7
11	21.5	33.2	13.6	17.7	06.9	05.8	25.0	26.2	30.7	38.4	36.2	31.7
12	26.6	36.0	14.2	19.0	05.4	06.1	24.2	25.6	31.0	38.5	36.4	32.0
13	19.0	32.5	13.0	18.9	07.2	08.3	25.0	26.6	31.0	39.2	36.8	32.2
14	20.0	37.5	15.0	20.0	09.8	06.7	25.6	27.0	30.6	38.0	36.0	32.2
15	21.0	39.4	15.4	20.8	09.7	07.3	26.6	28.0	32.0	40.5	37.0	33.0
16	21.5	40.8	18.8	22.0	14.7	08.5	27.0	28.5	32.5	42.2	38.4	33.6
17	21.4	40.5	15.0	21.0	09.5	06.7	27.1	28.6	33.0	42.2	38.2	33.8
18	27.0	40.0	18.0	23.7	06.0	12.1	28.2	29.4	33.0	41.0	38.5	34.0
19	22.0	36.4	19.0	24.0	14.4	14.7	26.8	28.6	33.2	40.0	37.2	33.6
20	22.4	35.4	21.0	23.8	18.9	15.0	28.5	29.3	33.0	39.8	37.0	33.2
21	23.4	35.5	21.6	23.6	18.2	14.5	28.0	29.2	33.3	39.5	37.8	33.6
22	21.2	35.0	20.4	20.2	17.5	08.6	27.5	28.6	33.1	39.6	38.0	33.8
23	22.6	35.0	20.6	20.4	17.0	08.4	28.0	29.2	33.0	39.5	38.0	33.8
24	22.0	35.1	20.4	20.0	17.0	08.3	27.0	28.5	33.2	38.8	37.2	33.6
25	23.0	37.0	20.8	21.0	15.7	08.9	27.6	28.6	33.0	41.0	38.4	34.0
26	24.4	38.5	19.5	20.2	12.2	06.6	28.6	29.6	33.5	42.1	39.5	34.5
27	27.0	39.8	18.0	20.6	10.0	06.5	28.8	30.0	34.0	42.4	39.6	34.8
28	27.5	40.0	17.6	18.8	08.8	03.4	28.6	30.0	34.1	43.2	39.5	35.0
29	23.8	37.6	21.6	18.9	18.0	05.4	27.4	29.2	34.0	41.6	39.0	35.0
30	22.0	37.5	17.9	20.0	14.2	06.8	27.4	29.0	34.2	41.8	39.0	34.7
31	19.5	35.5	16.0	20.0	11.5	08.1	26.6	28.5	33.5	40.2	38.4	34.6
Total	685.5	1115.1	537.8	629.4	372.2	260.1	824.7	865.3	995.3	1226.9	1147.6	1021.2
Mean	22.1	36.0	17.3	20.3	12.0	8.4	26.6	27.9	32.1	39.6	37.0	32.9
S.D.	2.6	2.7	2.6	1.7	3.9	2.7	1.3	1.3	1.4	2.1	1.6	1.3
C.V.%	11.8	7.5	15.2	8.4	32.7	32.0	5.0	4.8	4.4	5.2	4.4	4.1
Highest	27.5	40.8	21.6	24.0	18.9	15.0	28.8	30.0	34.2	43.2	39.6	35.0
Lowest	17.5	31.5	13.0	16.8	5.4	3.4	24.2	25.6	30.0	32.6	34.2	30.8

April-2011

Date	Temperature c°				RH. %			Wind Direction		W.S.	B.S.S	EVAPO	Rainfall
	Max	Min	Mean	Range	I	II	Mean	I	II	(kmph)	(hrs.)	(mm)	(mm)
1	36.0	21.0	28.5	15.0	78	28	53	29	25	06.3	10.0	08.1	000.0
2	35.5	20.1	27.8	15.4	82	16	49	27	29	05.1	09.7	05.8	000.0
3	37.0	19.0	28.0	18.0	69	06	38	29	34	06.2	09.9	08.4	000.0
4	36.8	21.5	29.2	15.3	20	09	15	02	32	06.7	10.5	10.4	000.0
5	37.0	24.0	30.5	13.0	23	10	17	36	36	06.2	10.4	10.5	000.0
6	38.0	21.5	29.8	16.5	70	09	40	36	36	06.8	10.2	09.6	000.0
7	39.0	23.7	31.4	15.3	28	13	21	02	36	06.3	09.5	09.4	000.0
8	39.0	22.0	30.5	17.0	55	13	34	36	32	05.7	09.3	10.0	000.0
9	39.7	23.0	31.4	16.7	60	16	38	36	34	05.8	09.3	11.4	000.0
10	40.0	23.5	31.8	16.5	59	20	40	36	36	04.0	09.3	10.5	000.0
11	38.7	23.0	30.9	15.7	81	27	54	36	34	06.6	09.4	07.8	000.0
12	38.0	22.4	30.2	15.6	70	19	45	36	34	05.8	09.7	07.4	000.0
13	39.5	23.3	31.4	16.2	42	19	31	02	36	06.0	10.0	09.4	000.0
14	39.8	23.4	31.6	16.4	84	20	52	02	02	06.8	10.2	10.0	000.0
15	39.0	24.5	31.8	14.5	71	22	47	36	32	06.3	07.8	09.1	000.0
16	39.5	22.1	30.8	17.4	95	18	57	36	34	05.4	10.3	09.2	000.0
17	40.5	23.3	31.9	17.2	80	23	52	36	02	05.1	10.4	09.2	000.0
18	39.2	23.6	31.4	15.6	80	11	46	36	23	05.4	10.0	09.8	000.0
19	39.5	23.8	31.7	15.7	85	15	50	36	23	06.4	08.0	09.4	000.0
20	39.4	23.4	31.4	16.0	58	19	39	36	00	06.8	10.0	10.0	000.0
21	39.0	24.8	31.9	14.2	61	17	39	36	23	06.2	10.0	09.6	000.0
22	40.0	21.5	30.8	18.5	54	10	32	36	32	06.2	10.0	10.4	000.0
23	41.0	22.7	31.9	18.3	65	9	37	32	36	05.6	10.8	09.8	000.0
24	41.5	22.5	32.0	19.0	66	13	40	36	32	06.0	10.6	10.9	000.0
25	41.0	25.5	33.3	15.5	67	16	42	36	36	07.7	10.8	10.0	000.0
26	40.2	23.2	31.7	17.0	76	24	50	36	36	07.6	10.5	10.6	000.0
27	39.6	23.6	31.6	16.0	82	22	52	36	34	07.2	10.8	10.6	000.0
28	40.6	24.8	32.7	15.8	75	23	49	02	32	08.0	10.5	10.6	000.0
29	40.2	24.5	32.4	15.7	77	28	53	36	34	07.0	10.3	09.6	000.0
30	38.7	25.2	32.0	13.5	73	26	50	02	32	8.0	10.4	9.4	000.0
Total	1172.9	690.4	931.7	482.5	1986.0	521.0	1253.5			189.2	298.6	286.9	0.0
Mean	39.1	23.0	31.1	16.1	66.2	17.4	41.8			6.3	10.0	9.6	
S.D.	1.5	1.5	1.3	1.4	18.2	6.2	10.9			0.9	0.7	1.2	
C.V.%	3.8	6.4	4.2	8.6	27.5	35.8	26.1			14.2	7.2	12.0	
High.	41.5	25.5	33.3	19.0	95.0	28.0	56.5			8.0	10.8	11.4	
Low.	35.5	19.0	27.8	13.0	20.0	6.0	14.5			4.0	7.8	5.8	
Mode	39.0	21.5	30.5	16.5	82.0	16.0	39.5			6.2	10.0	9.4	

April-2011												
Date	D.B.		W.B.		V.P.(mmHg)		Soil Temperature					
	I	II	I	II	I	II	5(I)	10(I)	20(I)	5(II)	10(II)	20(II)
1	24.2	34.4	21.6	21.5	17.8	11.5	27.9	29.0	33.5	40.0	39.0	34.0
2	23.0	36.8	20.9	20.0	17.1	07.3	27.7	29.5	33.7	41.2	37.8	34.8
3	23.8	36.5	20.0	17.0	15.2	02.7	26.7	28.6	33.6	40.0	38.2	34.2
4	27.4	36.0	15.2	17.7	05.6	04.1	27.0	28.7	33.5	40.2	38.8	34.5
5	27.0	37.0	15.4	18.6	06.1	04.0	27.5	29.0	33.5	40.6	39.0	34.6
6	24.0	38.7	20.3	19.0	15.7	03.7	28.2	29.5	34.0	41.6	38.8	34.5
7	28.8	39.2	17.6	20.6	08.3	04.9	29.5	30.5	34.2	42.4	39.7	35.0
8	26.0	39.0	20.4	20.6	13.9	07.0	29.0	30.0	34.0	42.8	40.0	35.0
9	27.5	39.0	22.0	21.4	16.5	08.3	29.0	31.0	34.5	45.0	39.5	35.5
10	26.5	38.2	21.0	22.0	15.3	09.5	30.0	32.5	34.5	41.0	40.4	36.0
11	25.3	36.4	23.0	22.8	19.7	12.5	30.0	31.6	35.3	41.6	40.1	35.6
12	26.6	38.4	22.6	22.0	18.3	09.8	30.4	31.5	35.5	43.5	40.8	36.2
13	29.0	38.5	20.4	22.0	12.7	09.7	30.6	31.7	35.5	43.0	41.0	36.5
14	25.6	38.6	23.6	22.5	20.6	10.7	30.5	31.7	35.6	42.8	41.0	36.5
15	27.0	38.8	23.2	23.0	19.0	11.4	31.2	32.0	36.0	42.8	41.8	36.7
16	24.0	39.8	23.4	22.4	21.2	09.7	30.5	32.0	36.2	44.0	42.6	37.0
17	27.2	39.0	24.6	23.4	21.6	12.0	31.0	32.3	36.5	43.6	42.0	37.0
18	26.8	39.0	24.2	21.0	21.1	05.9	31.6	32.2	35.2	43.8	42.0	37.2
19	25.0	39.2	23.1	21.0	20.1	07.5	30.7	32.0	36.2	43.8	42.0	37.2
20	27.5	38.6	21.6	22.0	15.8	09.8	31.2	32.4	36.5	44.0	41.8	37.0
21	28.0	39.4	22.6	22.0	17.2	09.1	31.6	32.7	36.6	44.4	42.0	37.6
22	27.5	40.5	20.9	20.4	14.6	06.1	30.0	33.5	37.0	46.0	42.0	36.5
23	26.0	40.0	21.4	19.9	16.5	05.0	30.5	32.0	36.5	45.5	42.0	37.0
24	26.5	40.0	21.9	20.9	17.1	07.1	30.5	31.5	35.0	44.8	42.0	38.0
25	27.0	40.0	22.4	22.0	17.7	08.8	31.0	33.0	36.5	43.8	41.5	37.0
26	26.0	38.5	23.0	23.4	19.2	12.3	31.0	33.5	36.5	43.0	41.5	37.0
27	27.0	40.2	24.4	24.0	21.6	12.5	31.0	32.4	36.5	43.8	42.5	36.5
28	26.6	40.0	23.4	24.2	19.6	13.0	31.6	33.6	33.2	43.6	42.2	37.6
29	26.5	37.9	23.6	24.0	20.0	13.9	31.6	33.0	37.0	43.0	43.5	42.0
30	27.2	38.8	23.6	24.0	19.6	13.3	31.8	33.2	37.0	44.0	42.6	37.7
Total	790.5	1156.4	651.3	645.3	504.7	263.1	900.8	946.1	1059.3	1289.6	1228.1	1091.9
Mean	26.4	38.5	21.7	21.5	16.8	8.8	30.0	31.5	35.3	43.0	40.9	36.4
S.D.	1.5	1.4	2.3	1.8	4.2	3.2	1.5	1.5	1.3	1.6	1.5	1.6
C.V.%	5.5	3.7	10.7	8.6	24.9	36.7	4.9	4.8	3.6	3.7	3.7	4.3
Highest	29.0	40.5	24.6	24.2	21.6	13.9	31.8	33.6	37.0	46.0	43.5	42.0
Lowest	23.0	34.4	15.2	17.0	5.6	2.7	26.7	28.6	33.2	40.0	37.8	34.0

May-2011													
Date	Temperature c°				RH. %			Wind Direction		W.S.	B.S.S	EVAP0	Rainfall
	Max	Min	Mean	Range	I	II	Mean	I	II	(kmph)	(hrs)	(mm)	(mm)
1	39.8	25.1	32.5	14.7	79	25	52	36	32	8.7	10.4	9.1	000.0
2	40.0	24.0	32.0	16.0	82	25	54	29	27	5.8	10.5	9.2	000.0
3	38.5	24.6	31.6	13.9	84	40	62	27	34	7.0	10.4	9.8	000.0
4	35.5	24.8	30.2	10.7	81	42	62	23	25	9.3	10.2	9.3	000.0
5	35.4	25.6	30.5	9.8	83	45	64	25	25	9.4	9.6	8.0	000.0
6	36.4	24.4	30.4	12.0	87	42	65	25	29	9.2	10.0	8.4	000.0
7	37.2	26.5	31.9	10.7	83	42	63	27	27	15.3	08.7	10.1	000.0
8	38.8	25.6	32.2	13.2	78	39	59	36	23	06.8	08.7	09.4	000.0
9	38.4	25.0	31.7	13.4	84	17	51	36	29	06.5	09.3	07.7	000.0
10	39.1	25.5	32.3	13.6	84	32	58	36	27	07.5	10.2	09.0	000.0
11	37.6	25.2	31.4	12.4	80	36	58	25	27	09.6	10.0	09.8	000.0
12	37.1	25.5	31.3	11.6	77	44	61	25	27	09.2	10.3	08.4	000.0
13	36.5	25.4	31.0	11.1	80	41	61	25	27	08.9	09.7	08.3	000.0
14	36.7	25.5	31.1	11.2	87	34	61	29	27	08.2	10.2	08.2	000.0
15	38.0	25.5	31.8	12.5	85	33	59	25	27	08.3	09.8	08.8	000.0
16	38.2	25.6	31.9	12.6	84	24	54	25	32	08.4	10.5	09.2	000.0
17	40.0	24.8	32.4	15.2	85	23	54	32	27	07.7	10.8	10.0	000.0
18	40.3	26.8	33.6	13.5	85	37	61	18	27	06.7	10.2	08.8	000.0
19	39.0	26.5	32.8	12.5	83	39	61	18	27	08.8	09.6	08.6	000.0
20	38.0	27.0	32.5	11.0	83	46	65	25	27	11.7	10.4	09.6	000.0
21	36.8	27.6	32.2	9.2	77	46	62	25	25	17.1	06.0	09.7	000.0
22	35.0	28.0	31.5	7.0	78	52	65	23	25	18.3	01.2	06.6	000.0
23	36.3	27.0	31.7	9.3	83	47	65	25	25	15.2	06.4	08.0	000.0
24	37.2	27.0	32.1	10.2	82	46	64	25	25	11.3	09.7	08.7	000.0
25	37.0	26.3	31.7	10.7	79	41	60	27	25	09.9	10.7	08.7	000.0
26	37.0	26.0	31.5	11.0	81	39	60	27	25	07.9	10.7	07.8	000.0
27	38.2	26.0	32.1	12.2	78	28	53	29	29	08.2	10.6	10.8	000.0
28	38.8	26.5	32.7	12.3	71	36	54	29	29	08.3	10.8	09.2	000.0
29	39.0	27.0	33.0	12.0	78	33	56	29	32	08.3	10.3	10.8	000.0
30	40.5	27.2	33.9	13.3	81	37	59	29	27	08.6	10.3	10.2	000.0
31	38.4	26.8	32.6	11.6	78	44	61	29	29	09.9	10.7	09.4	000.0
Total	844.0	804.3	989.5	370.4	2520.0	1155.0	1837.5			296.0	296.9	279.6	0.0
Mean	37.9	25.9	31.9	11.9	81.3	37.3	59.3			9.5	9.6	9.0	
S.D.	1.5	1.0	0.8	1.9	3.5	8.3	4.2			3.0	1.9	0.9	
C.V.%	3.9	3.8	2.6	15.7	4.3	22.2	7.0			31.7	20.0	10.3	
High.	40.5	28.0	33.9	16.0	87.0	52.0	65.0			18.3	10.8	10.8	
Low.	35.0	24.0	30.2	7.0	71.0	17.0	50.5			5.8	1.2	6.6	
Mode	40.0	25.5	32.2	10.7	83	42	61			8.3	10.2	9.2	

May-2011												
Date	D.B.		W.B.		V.P.(mmHg)		Soil Temperature					
	I	II	I	II	I	II	5(I)	10(I)	20(I)	5(II)	10(II)	20(II)
1	27.0	39.2	24.3	24.0	21.2	13.3	32.0	33.5	37.0	44.0	43.0	38.0
2	26.5	37.5	24.4	23.0	21.7	12.2	31.8	33.0	37.2	43.8	42.5	38.0
3	27.2	34.5	25.2	24.4	22.8	16.7	32.0	33.1	37.0	43.2	41.4	37.6
4	27.0	34.4	24.4	25.6	21.7	19.2	31.6	33.0	36.7	42.8	41.2	37.5
5	27.5	35.0	25.4	25.6	23.0	18.9	32.0	33.0	37.0	42.6	41.7	37.8
6	26.6	36.0	25.0	24.2	22.8	15.4	31.0	32.5	37.0	43.2	41.0	37.4
7	28.0	37.0	25.7	26.6	23.6	19.7	32.2	33.8	38.0	44.2	43.0	37.8
8	27.2	37.0	24.4	26.0	21.2	18.4	32.3	33.4	37.0	44.3	43.4	37.5
9	27.0	38.8	25.0	21.6	22.5	08.9	32.0	33.3	37.5	44.2	42.0	38.0
10	27.4	36.0	25.4	23.6	23.1	14.3	33.0	34.0	37.0	43.6	42.0	38.0
11	28.0	35.7	25.4	24.4	22.8	16.0	31.5	32.8	37.0	43.2	41.8	37.7
12	28.0	35.1	25.0	25.4	22.0	18.4	32.3	33.1	37.0	44.3	41.8	37.7
13	28.0	35.6	25.4	25.4	22.8	18.1	32.0	33.4	37.0	44.0	42.0	38.0
14	27.0	37.3	25.4	25.0	23.3	16.3	32.0	32.8	37.0	43.6	42.5	38.1
15	27.5	37.4	25.4	25.0	23.2	16.2	32.0	33.5	35.0	44.2	42.6	38.0
16	28.2	39.5	25.4	24.0	22.7	12.9	32.0	33.4	37.0	45.2	42.0	38.5
17	27.5	39.8	25.4	24.0	23.1	12.7	30.0	34.0	37.5	45.5	43.5	38.6
18	28.5	37.7	26.2	26.0	24.3	18.0	34.0	34.8	38.0	44.6	43.4	37.8
19	28.8	37.2	26.8	26.0	24.8	18.3	34.0	34.8	37.8	44.2	42.8	38.5
20	29.2	35.5	27.0	26.4	25.4	20.3	33.5	34.2	38.0	42.5	40.6	38.4
21	29.6	34.0	26.5	27.0	23.9	18.2	33.8	34.5	37.5	42.0	38.6	37.5
22	29.5	35.0	26.4	27.0	24.1	21.9	32.5	34.0	36.5	47.0	40.0	37.5
23	29.2	35.8	27.1	26.9	25.4	22.8	32.0	33.2	34.8	46.0	41.5	37.5
24	29.4	36.2	27.1	26.9	26.1	20.7	31.0	33.8	37.0	45.0	41.8	38.0
25	29.4	36.6	26.9	26.1	24.3	18.7	32.5	33.8	37.4	46.0	41.6	38.0
26	28.5	37.0	26.1	26.1	23.8	18.4	32.0	33.0	37.0	45.5	42.5	36.8
27	29.0	38.5	26.1	24.5	23.3	16.8	32.8	33.2	37.5	44.0	43.0	38.7
28	29.5	38.5	25.4	26.5	21.7	18.3	32.5	34.0	39.5	45.2	43.0	38.1
29	29.5	40.0	26.4	26.9	23.9	20.9	33.5	34.5	37.6	46.0	43.2	38.5
30	29.0	38.0	26.4	26.2	24.2	18.2	33.8	35.0	38.1	44.2	43.0	39.0
31	30.0	36.9	27.0	27.0	24.9	20.7	33.5	34.6	38.0	44.2	42.2	38.6
Total	874.7	1142.7	798.0	787.3	723.6	539.8	1003.1	1043.0	1153.6	1372.3	1304.6	1177.1
Mean	28.2	36.9	25.7	25.4	23.3	17.4	32.4	33.6	37.2	44.3	42.1	38.0
S.D.	1.0	1.6	0.9	1.4	1.2	3.1	0.9	0.7	0.8	1.2	1.1	0.5
C.V.%	3.7	4.5	3.3	5.3	5.3	17.8	2.9	2.0	2.3	2.6	2.5	1.2
Highest	30.0	40.0	27.1	27.0	26.1	22.8	34.0	35.0	39.5	47.0	43.5	39.0
Lowest	26.5	34.0	24.3	21.6	21.2	8.9	30.0	32.5	34.8	42.0	38.6	36.8

June-2011													
Date	Temperature c°				RH. %			Wind Direction		W.S.	B.S.S	EVAPO	Rainfall
	Max	Min	Mean	Range	I	II	Mean	I	II	(kmph)	(Hrs.)	(mm)	(mm)
1	37.5	27.4	32.5	10.1	76	46	61	25	25	12.7	09.9	09.4	000.0
2	37.2	27.5	32.4	9.7	81	41	61	23	25	12.4	06.3	08.9	000.0
3	38.6	26.5	32.6	12.1	81	75	78	36	25	07.5	04.5	07.7	000.0
4	38.5	26.8	32.7	11.7	79	27	53	36	36	04.8	03.7	05.2	002.2
5	41.4	27.2	34.3	14.2	78	45	62	29	36	08.1	01.7	05.7	000.0
6	41.0	27.7	34.4	13.3	81	48	65	29	25	07.8	00.0	06.1	000.0
7	39.0	27.6	33.3	11.4	88	34	61	27	25	07.0	00.0	05.1	000.0
8	41.0	27.8	34.4	13.2	77	42	60	18	23	08.6	01.4	07.4	000.0
9	39.5	27.4	33.5	12.1	74	43	59	18	23	08.6	06.3	08.3	000.0
10	39.0	27.0	33.0	12.0	77	39	58	25	27	06.8	09.1	07.0	000.0
11	40.0	27.0	33.5	13.0	82	47	65	34	32	04.1	06.3	06.4	000.0
12	38.0	22.0	30.0	16.0	80	70	75	36	36	06.4	03.0	05.6	028.4
13	32.0	26.0	29.0	6.0	92	66	79	18	29	05.0	00.0	02.9	006.4
14	32.7	25.9	29.3	6.8	90	73	82	18	32	06.7	04.4	05.4	000.5
15	33.0	26.0	29.5	7.0	85	54	70	25	27	07.8	02.6	04.7	000.0
16	35.0	26.6	30.8	8.4	86	58	72	25	25	11.9	05.2	06.3	000.0
17	35.5	27.0	31.3	8.5	81	54	68	25	25	13.2	01.5	07.6	000.0
18	35.4	27.7	31.6	7.7	78	57	68	25	25	17.2	00.5	07.8	000.0
19	34.6	28.0	31.3	6.6	79	56	68	27	25	16.4	00.0	07.4	000.0
20	35.0	27.5	31.3	7.5	75	57	66	27	25	15.0	00.0	07.6	000.0
21	34.8	27.6	31.2	7.2	81	51	66	25	25	14.9	00.0	08.0	000.0
22	35.4	27.4	31.4	8.0	79	53	66	27	27	13.3	00.0	07.3	000.0
23	35.2	27.0	31.1	8.2	79	55	67	25	27	14.4	00.0	07.0	000.0
24	33.8	27.1	30.5	6.7	74	54	64	27	29	13.1	00.0	07.0	000.0
25	35.0	27.3	31.2	7.7	75	50	63	25	27	15.0	00.0	07.5	000.0
26	35.5	27.0	31.3	8.5	79	53	66	27	25	15.8	00.0	08.0	000.0
27	35.6	26.8	31.2	8.8	81	55	68	27	25	16.2	00.0	07.7	000.0
28	34.5	27.4	31.0	7.1	80	65	73	29	27	16.7	00.0	07.6	000.0
29	32.2	26.6	29.4	5.6	78	58	68	25	25	15.8	00.0	05.2	000.0
30	33.7	27.2	30.5	6.5	75	50	63	27	23	16.8	00.0	04.7	000.0
Total	1089.6	808.0	948.8	281.6	2401.0	1576.0	1988.5			340.0	66.4	202.5	37.5
Mean	36.3	26.9	31.6	9.4	80.0	52.5	66.3			11.3	2.2	6.8	
S.D.	2.7	1.1	1.5	2.8	4.5	10.8	6.4			4.3	3.0	1.4	
C.V.%	7.5	4.0	4.8	29.9	5.6	20.5	9.7			37.7	134.3	21.3	
High.	41.4	28.0	34.4	16.0	92.0	75.0	81.5			17.2	9.9	9.4	
Low.	32.0	22.0	29.0	5.6	74.0	27.0	53.0			4.1	0.0	2.9	
Mode	35.0	27.0	31.3	12.1	81.0	54.0	66.0			7.8	0.0	7.0	

June-2011												
Date	D.B.		W.B.		V.P. (mmHg)		Soil Temperature					
	I	II	I	II	I	II	5(I)	10(I)	20(I)	5(II)	10(II)	20(II)
1	30.2	36.0	26.8	26.7	24.3	20.8	34.0	34.5	38.0	43.0	41.6	38.5
2	29.8	37.0	27.2	26.4	26.2	19.2	33.8	34.9	38.1	44.1	42.8	38.7
3	29.4	27.2	26.8	24.0	24.8	20.4	33.5	34.8	36.2	45.0	42.0	38.5
4	29.8	40.6	27.0	25.6	25.0	15.4	30.8	32.0	36.5	47.0	41.2	37.5
5	30.0	38.0	27.0	28.0	24.9	22.1	32.5	33.4	37.0	45.0	41.5	36.0
6	29.6	37.5	27.0	28.4	25.2	23.4	32.8	33.5	37.0	39.2	37.6	37.2
7	29.0	40.2	27.4	27.2	26.4	19.0	33.0	33.5	36.5	43.8	42.6	38.0
8	29.6	38.6	26.4	27.8	23.9	21.4	34.0	35.0	38.0	44.6	43.7	39.0
9	30.0	38.0	26.4	27.6	23.6	21.2	34.0	35.0	38.6	46.2	44.8	39.4
10	30.2	39.0	27.0	27.3	24.8	20.0	34.5	35.2	39.0	46.6	44.5	39.2
11	29.5	37.2	27.0	27.8	25.2	23.9	34.0	35.0	38.6	43.2	41.5	39.0
12	28.4	31.6	25.8	27.2	23.3	24.3	30.0	30.6	35.7	32.7	31.8	35.6
13	27.0	31.7	26.0	26.6	24.8	23.0	29.5	30.0	34.0	37.0	36.7	35.5
14	27.7	29.6	26.4	25.8	25.0	22.5	30.0	30.6	34.5	36.8	36.6	35.5
15	29.0	34.2	27.0	26.8	25.5	21.9	30.0	30.3	34.0	49.8	38.6	35.5
16	29.0	33.6	26.2	27.0	26.0	22.7	30.4	31.2	35.0	37.2	36.1	35.1
17	29.2	34.7	26.6	27.2	24.5	22.5	30.5	31.0	34.6	39.0	38.0	35.6
18	29.4	33.8	26.4	27.0	23.9	22.5	31.4	32.0	35.0	38.0	37.2	35.7
19	29.4	33.8	26.6	26.7	24.3	22.0	30.5	30.6	35.0	37.2	36.0	35.5
20	30.5	34.0	27.0	27.2	24.6	22.9	31.5	31.6	35.0	38.0	37.0	36.0
21	29.0	34.8	26.4	26.6	24.2	21.1	31.5	32.0	35.0	38.0	36.8	36.0
22	29.0	34.5	26.2	26.4	23.3	20.1	31.5	32.0	35.0	38.6	37.0	35.7
23	29.0	33.0	26.2	26.0	23.8	20.9	31.0	35.0	35.0	36.2	35.1	34.8
24	30.0	33.8	26.4	26.5	24.1	21.5	31.0	31.7	34.5	37.0	36.0	35.2
25	29.4	34.2	26.0	26.0	23.0	20.2	31.2	31.8	34.6	38.5	37.0	35.5
26	29.6	33.6	26.8	26.0	24.9	20.7	30.5	31.8	34.5	38.8	37.6	35.7
27	28.7	33.0	26.2	26.0	24.0	20.9	31.2	31.8	35.0	36.5	35.6	35.0
28	28.6	31.0	26.0	25.9	23.6	23.7	31.0	31.8	34.9	34.0	33.5	34.5
29	29.0	32.2	26.0	25.8	23.3	20.9	30.6	31.0	34.0	35.0	34.2	34.5
30	29.6	32.2	26.2	25.8	23.5	20.2	31.0	31.3	34.0	35.0	34.2	34.5
Total	878.6	1038.6	796.4	799.3	733.9	641.3	951.2	974.9	1072.8	1201.0	1148.8	1092.4
Mean	29.3	34.6	26.5	26.6	24.5	21.4	31.7	32.5	35.8	40.0	38.3	36.4
S.D.	0.7	3.1	0.4	0.9	0.9	1.8	1.5	1.7	1.6	4.5	3.5	1.6
C.V.%	2.5	9.0	1.6	3.3	3.6	8.3	4.7	5.2	4.4	11.2	9.1	4.4
High.	30.5	40.6	27.4	28.4	26.4	24.3	34.5	35.2	39.0	49.8	44.8	39.4
Low.	27.0	27.2	25.8	24.0	23.0	15.4	29.5	30.0	34.0	32.7	31.8	34.5

July-2011													
Date	Temperature c°				RH. %			Wind Direction		W.S.	B.S.S	EVAPO	Rainfall
	Max	Min	Mean	Range	I	II	Mean	I	II	(kmph)	(hrs)	(mm)	(mm)
1	34.8	26.5	30.7	8.3	80	51	66	25	25	13.6	00.0	05.0	000.0
2	35.1	26.3	30.7	8.8	79	59	69	23	23	15.2	00.0	06.8	000.0
3	34.8	26.5	30.7	8.3	76	58	67	25	25	09.3	00.0	06.2	002.2
4	31.4	25.0	28.2	6.4	89	67	78	25	27	14.5	00.0	06.0	008.0
5	34.3	24.5	29.4	9.8	83	48	66	00	25	06.3	00.0	03.9	005.8
6	34.5	24.4	29.5	10.1	86	45	66	27	14	06.0	01.5	05.6	000.0
7	35.5	25.6	30.6	9.9	90	64	77	29	25	03.7	00.0	03.8	006.0
8	33.6	23.5	28.6	10.1	93	70	82	00	27	05.7	00.0	02.8	010.4
9	31.0	23.0	27.0	8.0	90	100	95	00	25	06.2	00.0	02.9	000.0
10	26.0	22.5	24.3	3.5	98	87	93	00	27	05.8	00.0	00.4	030.2
11	28.5	26.0	27.3	2.5	92	70	81	00	27	07.0	00.0	01.6	005.0
12	31.2	25.5	28.4	5.7	89	62	76	29	27	08.8	00.0	03.2	002.2
13	32.4	25.5	29.0	6.9	89	76	83	29	27	08.3	00.0	03.6	000.0
14	32.0	26.0	29.0	6.0	86	76	81	29	29	07.7	00.0	03.6	000.0
15	32.4	25.4	28.9	7.0	93	75	84	18	18	06.6	00.0	04.1	001.5
16	32.1	25.5	28.8	6.6	92	55	74	14	25	04.8	00.0	01.6	000.0
17	34.5	26.0	30.3	8.5	89	63	76	00	36	06.2	00.0	04.6	000.0
18	35.7	23.8	29.8	11.9	93	95	94	36	25	03.4	03.3	03.4	042.5
19	29.2	25.0	27.1	4.2	97	85	91	00	29	04.9	00.0	00.8	024.2
20	30.0	26.2	28.1	3.8	87	80	84	25	27	08.5	00.0	03.0	001.1
21	30.5	26.5	28.5	4.0	82	70	76	25	25	12.9	00.1	03.6	000.0
22	31.8	25.8	28.8	6.0	87	60	74	25	25	13.2	00.2	03.8	000.0
23	33.0	26.3	29.7	6.7	89	78	84	18	25	11.6	00.0	05.2	000.0
24	30.2	26.5	28.4	3.7	93	69	81	18	29	09.1	01.6	04.4	000.0
25	32.6	26.2	29.4	6.4	97	84	91	05	27	07.3	00.0	02.7	003.5
26	31.0	23.4	27.2	7.6	98	91	95	18	25	02.9	00.2	01.0	091.6
27	31.4	25.3	28.4	6.1	100	86	93	29	25	03.6	00.0	01.9	025.0
28	30.2	24.8	27.5	5.4	95	77	86	00	25	04.0	01.4	01.9	008.0
29	31.6	25.0	28.3	6.6	92	91	92	25	23	04.8	02.9	03.9	002.8
30	31.0	24.6	27.8	6.4	92	100	96	00	25	05.0	0.5	02.0	013.2
31	28.6	24.0	26.3	4.6	99	99	99	00	29	02.3	0.0	01.0	058.5
Total	990.9	781.1	886.0	209.8	2795.0	2291.0	2543.0			229.2	11.7	104.3	341.7
Mean	32.0	25.2	28.6	6.8	90.2	73.9	82.0			7.4	0.4	3.4	11.0
S.D.	2.3	1.1	1.4	2.3	6.0	15.5	9.9			3.6	0.9	1.7	20.4
C.V.%	7.2	4.4	4.9	33.4	6.6	20.9	12.1			48.2	226.9	49.2	185.3
High.	35.7	26.5	30.7	11.9	100.0	100.0	99.0			15.2	3.3	6.8	91.6
Low.	26.0	22.5	24.3	2.5	76.0	45.0	65.5			2.3	0.0	0.4	0.0
Mode	31.0	26.5	28.4	8.3	89.0	70.0	65.5			6.2	0.0	3.6	0.0

July-2011												
Date	D.B.		W.B.		V.P.(mmHg)		Soil Temperature					
	I	II	I	II	I	II	5(I)	10(I)	20(I)	5(II)	10(II)	20(II)
1	28.6	33.6	26.0	25.8	23.6	20.1	30.0	30.5	33.7	36.6	35.2	34.2
2	29.0	32.0	26.2	25.8	23.8	21.1	30.5	30.7	34.0	36.5	35.5	34.4
3	29.2	33.6	26.0	27.0	23.2	22.7	31.0	31.3	34.0	36.0	35.0	34.0
4	27.0	31.0	25.6	26.2	23.8	22.7	28.0	29.5	32.3	33.6	33.2	32.8
5	26.6	34.0	24.4	25.4	21.6	18.7	28.0	28.4	32.3	38.8	37.5	33.7
6	28.0	33.0	26.2	25.8	24.3	20.4	29.5	30.0	33.5	39.0	38.0	34.5
7	27.6	32.0	25.4	26.6	25.1	22.8	30.0	29.5	32.6	35.0	34.7	33.5
8	25.0	30.2	24.2	26.0	22.1	22.7	28.0	28.5	32.0	32.5	32.2	32.0
9	25.6	24.0	24.4	24.0	22.2	22.4	27.8	28.2	26.0	27.0	27.5	30.4
10	25.4	27.8	25.2	26.2	23.8	24.5	27.0	27.2	29.5	28.6	28.5	30.0
11	27.0	30.2	26.0	26.0	24.6	22.7	27.4	27.6	30.0	29.7	29.2	30.0
12	27.0	31.8	25.6	26.2	23.8	23.8	27.2	27.8	30.0	30.5	30.5	30.6
13	27.4	31.0	26.0	27.6	24.3	25.7	27.5	27.7	30.5	31.0	30.4	31.0
14	27.8	31.5	26.0	28.0	23.9	26.3	28.0	28.2	30.6	30.2	30.2	31.0
15	27.0	29.8	26.2	26.4	25.1	23.8	27.8	28.0	30.6	31.2	30.7	31.0
16	27.2	34.0	26.2	26.8	24.9	22.0	28.0	28.0	31.0	33.7	33.0	31.6
17	28.0	33.0	26.6	27.4	25.2	23.9	29.0	29.0	31.6	27.0	26.5	32.2
18	25.2	27.5	24.4	26.8	22.4	26.0	27.8	28.2	31.0	30.0	30.5	30.6
19	26.2	28.8	25.8	26.8	24.6	25.2	28.0	28.0	30.4	29.5	29.0	30.5
20	27.6	29.5	26.0	26.8	24.2	24.8	28.0	28.0	30.4	30.2	30.0	30.5
21	27.8	30.5	25.5	26.2	23.2	23.0	27.6	28.0	30.5	31.5	30.7	31.0
22	27.0	32.1	25.4	26.0	23.3	21.4	27.2	28.0	30.5	33.0	31.6	31.0
23	27.4	29.6	26.0	26.7	23.3	24.5	28.0	28.1	31.0	30.2	29.5	31.0
24	27.5	31.0	26.6	26.6	25.4	23.3	28.0	28.2	30.5	31.6	31.0	31.0
25	27.2	27.6	26.8	26.5	26.1	23.2	28.5	28.8	31.0	32.0	31.6	31.0
26	25.7	29.0	25.5	27.8	24.2	27.2	27.2	27.5	29.5	32.5	32.0	30.6
27	25.6	28.4	25.6	26.6	24.6	24.9	27.3	28.0	30.0	32.0	31.6	30.6
28	26.6	30.5	26.0	27.2	24.8	25.0	27.5	27.8	30.5	31.5	31.0	30.5
29	26.0	27.5	25.0	26.4	23.2	25.1	27.2	27.7	30.4	31.2	31.0	31.4
30	27.0	25.0	26.0	25.0	24.6	25.0	27.5	28.0	30.0	28.5	28.7	30.0
31	25.5	25.5	25.0	25.4	24.3	24.3	26.6	26.7	29.0	28.4	28.0	29.2
Total	835.7	935.0	795.8	818.0	743.5	729.2	871.1	881.1	958.9	989.0	974.0	975.8
Mean	27.0	30.2	25.7	26.4	24.0	23.5	28.1	28.4	30.9	31.9	31.4	31.5
S.D.	1.1	2.6	0.7	0.8	1.0	1.9	1.1	1.0	1.6	3.1	2.8	1.5
C.V.%	4.0	8.7	2.6	3.1	4.3	8.2	3.8	3.7	5.2	9.7	8.8	4.6
High.	29.2	34.0	26.8	28.0	26.1	27.2	31.0	31.3	34.0	39.0	38.0	34.5
Low.	25.0	24.0	24.2	24.0	21.6	18.7	26.6	26.7	26.0	27.0	26.5	29.2

August-2011													
Date	Temperature c ^o				RH. %			WD		W.S.	B.S.S	EVAPO	Rainfall
	Max	Min	Mean	Range	I	II	Mean	I	II	(kmph)	(hrs.)	(mm)	(mm)
1	27.8	24.0	25.9	3.8	100	92	96	00	25	06.1	0.0	00.0	092.5
2	28.8	24.5	26.7	4.3	98	73	86	00	29	04.5	0.0	01.0	015.8
3	31.6	25.4	28.5	6.2	92	86	89	14	29	05.3	3.2	03.6	002.2
4	31.0	24.6	27.8	6.4	87	89	88	25	29	05.4	1.8	03.0	005.8
5	30.8	25.4	28.1	5.4	98	78	88	25	25	06.7	1.1	3.4	006.1
6	31.2	26.4	28.8	4.8	85	71	78	25	25	9.3	1.6	03.5	000.0
7	31.5	26.0	28.8	5.5	87	74	81	25	25	11.8	1.2	04.5	000.0
8	31.7	26.1	28.9	5.6	92	74	83	25	27	10.2	0.4	04.0	001.0
9	31.8	26.0	28.9	5.8	93	84	89	25	29	11.3	0.5	02.1	000.0
10	30.0	25.8	27.9	4.2	93	92	93	25	27	9.0	0.0	02.6	001.2
11	28.6	28.3	28.5	0.3	92	87	90	25	27	12.2	0.0	01.4	009.0
12	30.5	25.5	28.0	5.0	94	87	91	25	25	14.1	0.4	02.7	014.5
13	29.0	25.6	27.3	3.4	93	91	92	23	27	8.4	0.0	00.7	002.0
14	29.6	25.0	27.3	4.6	90	78	84	25	27	5.5	0.5	01.2	025.8
15	30.5	25.2	27.9	5.3	93	85	89	23	27	8.3	0.0	02.4	002.4
16	28.4	25.1	26.8	3.3	92	82	87	25	25	5.7	0.0	01.5	004.0
17	30.0	25.5	27.8	4.5	86	86	86	25	25	8.7	0.0	01.8	000.0
18	30.2	25.2	27.7	5.0	93	76	85	14	25	6.9	0.0	02.6	000.0
19	31.9	25.0	28.5	6.9	92	76	84	18	25	3.1	4.1	04.8	004.6
20	30.6	25.0	27.8	5.6	89	70	80	29	29	03.2	00.0	02.4	000.0
21	31.7	23.5	27.6	8.2	95	95	95	00	25	03.3	02.0	02.4	043.0
22	29.5	24.7	27.1	4.8	89	89	89	05	25	03.6	00.0	01.0	008.6
23	30.4	25.4	27.9	5.0	92	95	94	14	00	02.4	00.6	01.0	006.0
24	30.3	25.0	27.7	5.3	93	90	92	00	09	02.5	00.3	02.4	005.8
25	30.0	24.6	27.3	5.4	96	87	92	00	23	04.4	01.1	01.9	009.5
26	29.0	24.2	26.6	4.8	92	79	86	00	29	03.2	00.0	02.1	014.5
27	31.2	24.0	27.6	7.2	97	81	89	00	16	05.7	00.0	02.7	004.8
28	30.0	23.9	27.0	6.1	94	91	93	27	25	05.6	00.0	01.4	017.4
29	29.0	24.3	26.7	4.7	86	92	89	05	09	03.9	00.4	02.0	004.0
30	29.7	24.2	27.0	5.5	97	75	86	16	23	04.4	00.6	02.1	041.2
31	31.5	25.4	28.5	6.1	84	72	78	16	23	06.7	02.4	04.0	000.0
Total	937.8	778.8	858.3	159.0	2854.0	2577.0	2715.5			201.4	22.2	72.2	341.7
Mean	30.3	25.1	27.7	5.1	92.1	83.1	87.6			6.5	0.7	2.3	11.0
S.D.	1.1	0.9	0.8	1.4	4.0	7.7	4.7			3.1	1.0	1.1	18.7
C.V.%	3.7	3.7	2.8	26.9	4.4	9.3	5.3			48.0	145.0	49.1	169.4
High.	31.9	28.3	28.9	8.2	100.0	95.0	96.0			14.1	4.1	4.8	92.5
Low.	27.8	23.5	25.9	0.3	84.0	70.0	78.0			2.4	0.0	0.0	0.0
Mode	30.0	25.4	27.3	4.8	92	92	89			6.7	0	2.4	0

August-2011												
Date	D.B.		W.B.		V.P.(mmHg)		Soil Temperature					
	I	II	I	II	I	II	5(I)	10(I)	20(I)	5(II)	10(II)	20(II)
1	24.5	27.4	24.5	26.4	24.5	25.2	25.6	25.0	27.5	29.5	28.6	28.5
2	26.4	30.8	26.2	27.0	25.4	24.3	27.0	27.2	29.0	32.5	31.0	30.0
3	27.0	28.0	26.0	26.2	24.6	24.3	27.8	28.0	30.0	32.0	32.0	31.0
4	27.0	30.2	25.4	28.8	23.3	28.9	27.8	28.2	30.0	31.0	30.6	31.0
5	26.2	30.5	26.0	27.0	25.1	24.9	28.0	28.3	30.3	32.0	31.0	30.8
6	28.0	30.8	26.0	26.6	24.1	23.5	28.0	28.3	30.5	32.0	31.8	31.0
7	27.5	30.5	25.8	26.8	23.9	24.0	28.0	28.1	31.5	31.6	31.5	31.1
8	27.0	29.6	26.0	26.0	24.6	23.1	28.0	28.0	30.5	31.0	31.5	31.3
9	26.8	28.5	26.0	26.4	24.8	24.5	27.5	28.0	30.5	28.8	29.0	30.5
10	26.7	27.0	25.8	26.0	24.4	24.6	27.2	27.4	29.7	28.0	28.2	29.8
11	26.8	27.1	25.8	25.4	24.3	23.3	26.0	26.8	29.0	29.0	29.6	29.8
12	26.3	28.0	25.6	26.4	24.2	24.8	26.7	27.0	29.2	29.0	28.6	29.5
13	26.8	28.0	26.0	26.8	24.8	25.7	27.0	27.4	29.0	28.2	28.0	29.5
14	26.0	30.0	25.4	27.0	23.6	24.9	27.0	27.5	29.0	30.0	29.5	29.6
15	26.0	28.0	25.2	26.0	23.6	24.1	27.0	27.5	29.5	28.5	28.4	29.0
16	27.0	29.0	26.0	26.6	24.6	24.6	27.0	27.2	29.0	29.8	29.5	29.6
17	27.4	28.6	25.6	26.8	23.5	24.9	27.0	27.5	29.5	30.6	30.1	30.0
18	26.8	31.1	26.0	27.6	24.8	25.6	27.0	27.2	29.7	32.0	31.2	31.5
19	26.8	28.6	25.8	25.4	24.3	22.4	27.0	27.6	30.0	30.4	30.5	30.5
20	27.0	30.6	25.6	26.4	23.8	23.2	27.0	27.7	30.0	32.6	32.5	31.2
21	26.6	26.0	26.0	25.4	24.8	23.9	27.0	27.2	30.0	29.5	29.4	30.0
22	27.0	26.8	25.6	25.4	23.8	23.5	27.2	27.5	29.5	30.5	30.2	30.0
23	27.0	26.0	26.0	25.4	24.6	23.9	27.5	27.7	30.0	30.0	30.0	30.4
24	25.8	26.2	25.0	25.0	23.2	23.1	27.0	27.2	29.5	29.5	29.4	30.8
25	24.5	27.6	24.0	26.0	22.1	24.2	26.5	27.0	29.5	29.8	29.5	29.6
26	26.0	29.4	25.0	26.5	23.2	24.2	27.0	27.2	29.5	30.6	30.2	30.0
27	25.6	27.9	25.2	25.4	23.8	22.8	26.6	26.7	29.0	29.9	29.4	29.7
28	25.5	27.3	24.8	26.2	23.0	24.9	26.6	26.7	29.0	29.5	29.0	29.6
29	27.0	28.0	25.2	27.0	22.9	24.6	27.0	27.2	29.0	29.5	29.2	29.5
30	25.4	30.8	25.0	27.2	23.5	24.8	26.6	27.0	29.0	32.0	30.0	30.0
31	27.2	30.4	25.2	26.4	22.8	23.3	27.0	27.2	29.5	32.4	32.0	30.5
Total	821.6	888.7	791.7	817.5	743.9	754.0	839.6	848.5	916.9	941.7	931.4	935.3
Mean	26.5	28.7	25.5	26.4	24.0	24.3	27.1	27.4	29.6	30.4	30.0	30.2
S.D.	0.8	1.6	0.5	0.8	0.8	1.2	0.6	0.6	0.7	1.3	1.2	0.7
C.V.%	3.0	5.5	2.0	3.0	3.2	4.8	2.1	2.3	2.4	4.4	4.0	2.4
Highest	28.0	31.1	26.2	28.8	25.4	28.9	28.0	28.3	31.5	32.6	32.5	31.5
Lowest	24.5	26.0	24.0	25.0	22.1	22.4	25.6	25.0	27.5	28.0	28.0	28.5

September-2011													
Date	Temperature c ^o				RH. %			WD		W.S.	B.S.S	EVAPO	Rainfall
	Max	Min	Mean	Range	I	II	Mean	I	II	(kmph)	(hrs.)	(mm)	(mm)
1	32.1	25.5	28.8	6.6	83	70	77	16	25	06.3	03.8	03.9	002.4
2	32.8	25.6	29.2	7.2	90	71	81	18	23	07.2	05.1	03.6	000.0
3	32.6	25.0	28.8	7.6	92	65	79	02	36	02.4	01.0	03.1	002.8
4	33.8	24.8	29.3	9.0	92	80	86	29	23	04.1	06.7	03.4	012.0
5	32.7	26.0	29.4	6.7	89	93	91	14	23	05.6	03.3	03.0	000.0
6	29.0	24.0	26.5	5.0	100	99	100	23	25	15.0	00.6	O. F.	102.0
7	26.8	25.5	26.2	1.3	91	84	88	25	27	13.8	00.0	01.7	044.0
8	28.0	25.3	26.7	2.7	92	82	87	18	25	09.6	00.0	01.5	008.0
9	29.0	25.0	27.0	4.0	91	81	86	00	23	08.7	00.0	01.5	000.0
10	29.2	25.3	27.3	3.9	96	74	85	00	29	06.7	00.0	01.9	000.0
11	30.2	24.7	27.5	5.5	91	94	93	34	27	04.0	00.6	02.0	000.0
12	28.3	24.2	26.3	4.1	100	92	96	29	23	04.1	00.0	01.1	006.0
13	28.0	25.0	26.5	3.0	94	76	85	18	23	05.7	00.0	00.5	020.0
14	31.5	24.0	27.8	7.5	83	74	79	14	23	05.4	04.2	01.0	007.4
15	31.2	25.5	28.4	5.7	92	67	80	18	20	04.3	00.0	02.5	001.0
16	31.5	24.6	28.1	6.9	93	100	97	23	25	07.7	06.6	03.7	000.0
17	26.6	24.2	25.4	2.4	94	75	85	25	25	05.0	00.0	00.4	030.4
18	30.3	24.3	27.3	6.0	92	68	80	23	25	05.8	05.8	03.0	000.0
19	31.0	23.8	27.4	7.2	88	65	77	25	25	06.7	08.3	03.8	000.0
20	31.8	23.2	27.5	8.6	87	60	74	05	29	04.4	09.0	04.5	000.0
21	31.5	23.2	27.4	8.3	81	65	73	25	29	03.7	07.7	04.0	000.0
22	31.6	24.0	27.8	7.6	84	61	73	25	27	04.8	08.6	04.5	000.0
23	31.5	23.2	27.4	8.3	84	60	72	36	27	05.0	09.1	04.0	000.0
24	32.5	23.8	28.2	8.7	86	60	73	29	18	03.6	07.8	04.4	002.4
25	32.0	24.5	28.3	7.5	95	62	79	25	25	03.5	07.4	05.0	002.0
26	31.8	22.4	27.1	9.4	84	74	79	00	25	04.2	08.6	04.0	000.0
27	32.0	21.5	26.8	10.5	91	56	74	18	25	03.4	06.5	02.8	000.0
28	32.2	22.5	27.4	9.7	78	57	68	00	27	03.5	08.6	03.8	000.8
29	32.5	22.5	27.5	10.0	77	49	63	00	29	02.6	06.7	04.0	000.6
30	32.8	22.7	27.8	10.1	79	47	63	36	25	03.0	07.5	03.1	000.0
31	926.8	725.8	826.3	201.0	2669.0	2161.0	2415.0			169.8	133.5	85.7	241.8
Total	30.9	24.2	27.5	6.7	89.0	72.0	80.5			5.7	4.5	3.0	8.1
Mean	1.9	1.1	1.0	2.5	6.0	14.1	9.3			2.9	3.6	1.3	20.4
S.D.	6.2	4.7	3.5	37.2	6.7	19.5	11.5			52.1	80.4	43.8	252.8
C.V.%	33.8	26.0	29.4	10.5	100.0	100.0	99.5			15.0	9.1	5.0	102.0
High.	26.6	21.5	25.4	1.3	77.0	47.0	63.0			2.4	0.0	0.4	0.0
Low.	31.5	25.5	27.4	7.6	92.0	65.0	78.5			4.1	0.0	4.0	0.0
Mode													

September-2011												
Date	D.B.		W.B.		V.P.		Soil Temperature					
	I	II	I	II	I	II	5(I)	10(I)	20(I)	5(II)	10(II)	20(II)
1	27.0	30.6	24.8	26.4	22.1	23.2	26.8	27.1	30.0	33.5	32.6	31.5
2	27.0	32.0	25.0	27.8	24.2	26.1	27.6	28.0	31.0	34.0	32.7	31.6
3	27.5	32.6	26.4	27.4	25.2	24.2	28.0	28.4	31.0	35.2	34.5	32.0
4	27.0	30.2	26.0	27.4	24.6	25.7	28.6	28.7	31.5	34.2	33.6	32.0
5	28.0	27.3	26.6	26.4	25.2	25.4	28.3	28.6	31.2	29.2	29.5	31.0
6	25.0	25.5	25.0	25.4	23.8	24.3	26.8	27.0	29.5	27.0	27.2	29.0
7	26.5	27.5	25.4	25.4	23.8	23.0	26.5	26.6	28.5	28.0	27.6	29.0
8	26.0	28.0	25.0	25.6	23.2	23.2	26.5	26.6	28.6	28.5	28.5	29.0
9	26.4	28.0	25.3	25.5	23.5	23.0	26.5	26.6	28.6	28.5	28.7	29.1
10	26.5	29.0	26.0	25.4	24.8	22.1	27.0	27.0	29.0	30.0	29.7	29.6
11	25.7	27.4	24.6	25.6	22.5	25.7	27.2	27.4	29.0	29.0	28.8	29.6
12	26.0	27.0	26.0	26.0	25.2	24.6	27.0	27.5	29.1	28.5	29.0	29.0
13	26.0	30.0	25.3	26.9	23.8	24.0	26.6	26.6	28.5	31.4	30.0	29.5
14	25.5	29.5	24.4	25.9	22.3	24.5	26.5	26.5	29.0	30.0	29.5	29.5
15	26.0	30.8	25.0	26.0	23.2	22.3	26.5	26.6	29.1	32.0	30.8	30.0
16	26.2	25.0	25.4	25.0	23.9	23.8	27.0	27.5	29.5	28.2	28.5	29.6
17	25.5	29.0	24.8	25.6	23.0	22.1	26.2	26.5	28.6	30.5	29.8	29.5
18	25.6	30.2	24.6	25.6	22.8	21.9	26.6	26.6	29.0	32.0	31.0	29.8
19	25.8	30.5	24.4	25.4	22.1	21.2	26.6	27.5	29.5	33.0	32.0	30.4
20	25.6	31.0	24.0	25.0	21.5	20.7	26.0	26.8	29.4	32.8	32.0	30.5
21	26.8	31.0	24.4	25.8	21.5	21.7	26.0	26.8	29.5	32.8	32.0	30.5
22	26.5	31.2	24.4	25.4	21.7	20.8	26.5	27.0	29.7	33.0	32.2	31.0
23	26.6	32.0	24.6	26.0	22.0	21.5	26.0	26.9	30.0	34.5	33.0	31.0
24	26.6	31.0	24.8	25.0	22.4	20.1	26.5	27.0	30.0	32.5	31.4	30.0
25	25.0	31.0	24.4	25.4	22.7	22.9	25.5	26.0	29.5	33.0	32.2	30.0
26	26.0	29.0	24.1	25.4	21.2	22.1	26.0	27.0	30.0	33.0	32.5	31.0
27	24.0	31.0	22.9	24.0	20.4	18.9	25.0	26.0	29.5	34.0	33.0	31.0
28	26.8	31.0	24.0	24.6	20.7	19.2	25.5	26.0	29.6	34.5	33.0	30.6
29	26.8	32.0	23.8	24.0	20.3	17.4	26.0	26.4	29.5	34.5	33.0	31.0
30	26.5	33.0	23.8	24.4	20.3	17.7	25.8	26.5	29.5	35.0	33.8	31.0
Total	786.4	893.3	745.2	769.7	683.9	673.3	797.6	809.7	886.4	952.3	932.1	908.3
Mean	26.2	29.8	24.8	25.7	22.8	22.4	26.6	27.0	29.5	31.7	31.1	30.3
S.D.	0.8	2.0	0.8	0.9	1.5	2.3	0.8	0.7	0.8	2.5	2.0	0.9
C.V.%	3.1	6.9	3.3	3.5	6.5	10.2	3.0	2.6	2.7	7.8	6.5	3.0
Highest	28.0	33.0	26.6	27.8	25.2	26.1	28.6	28.7	31.5	35.2	34.5	32.0
Lowest	24.0	25.0	22.9	24.0	20.3	17.4	25.0	26.0	28.5	27.0	27.2	29.0

October-2011													
Date	Temperature c°				RH. %			WD		W.S.	B.S.S	EVAPO	Rainfall
	Max	Min	Mean	Range	I	II	Mean	I	II	(kmph)	(hrs.)	(mm)	(mm)
1	33.3	23.4	28.4	9.9	78	45	61.5	05	25	3.9	9.2	04.0	000.0
2	33.5	23.5	28.5	10.0	78	55	66.5	36	27	4.2	9.7	04.8	000.0
3	32.7	22.5	27.6	10.2	71	53	62.0	36	25	4.0	8.5	05.1	000.0
4	32.5	22.8	27.7	9.7	81	58	69.5	36	29	4.3	10.2	05.8	000.0
5	33.0	23.1	28.1	9.9	73	55	64.0	36	36	3.1	7.4	03.1	000.0
6	33.5	24.4	29.0	9.1	73	46	59.5	36	29	4.1	39.8	04.5	000.0
7	34.7	24.0	29.4	10.7	72	40	56.0	36	34	6.0	10.4	05.4	000.0
8	34.5	23.9	29.2	10.6	84	38	61.0	36	02	6.0	10.1	05.6	000.0
9	34.5	24.0	29.3	10.5	83	38	60.5	02	27	6.0	10.2	06.0	000.0
10	31.7	24.9	28.3	6.8	69	42	55.5	02	36	5.3	10	05.5	000.0
11	35.7	26.2	31.0	9.5	62	37	49.5	36	02	5.4	9.4	05.7	000.0
12	36.6	27.0	31.8	9.6	57	30	43.5	02	05	5.3	7.8	06.3	000.0
13	37.5	24.8	31.2	12.7	55	34	44.5	05	05	5.0	9.3	06.5	000.0
14	37.0	27.8	32.4	9.2	49	38	43.5	05	05	4.5	7.1	06.0	000.0
15	36.2	25.8	31.0	10.4	61	32	46.5	36	05	03.8	02.8	06.0	000.0
16	37.3	24.0	30.7	13.3	71	35	53.0	36	36	03.2	08.1	06.4	000.0
17	37.0	25.0	31.0	12.0	70	38	54.0	00	05	02.7	07.2	04.9	000.0
18	37.2	25.3	31.3	11.9	70	41	55.5	18	09	02.5	09.3	05.1	000.0
19	37.8	25.2	31.5	12.6	72	54	63.0	36	36	02.8	08.1	04.6	000.0
20	35.0	24.7	29.9	10.3	74	26	50.0	36	29	03.0	03.1	03.5	000.0
21	35.2	19.0	27.1	16.2	75	25	50.0	18	07	02.6	10.3	05.7	000.0
22	36.2	19.0	27.6	17.2	76	27	51.5	25	05	02.2	09.9	04.5	000.0
23	37.0	18.4	27.7	18.6	58	21	39.5	23	09	02.6	09.8	05.3	000.0
24	37.0	17.3	27.2	19.7	63	28	45.5	00	02	03.0	09.9	05.2	000.0
25	32.2	19.1	25.7	13.1	67	31	49.0	18	09	03.3	10.0	05.2	000.0
26	36.0	21.0	28.5	15.0	71	28	49.5	29	36	03.2	09.3	05.4	000.0
27	36.2	19.5	27.9	16.7	67	29	48.0	36	09	02.9	09.3	05.9	000.0
28	36.6	18.6	27.6	18.0	78	33	55.5	00	36	02.5	08.8	05.2	000.0
29	36.8	21.0	28.9	15.8	56	29	42.5	00	09	02.3	09.9	05.2	000.0
30	36.6	23.1	29.9	13.5	78	28	53.0	05	02	02.8	08.1	05.1	000.0
31	35.8	24.0	29.9	11.8	71	36	53.5	00	05	2.5	06.2	04.7	000.0
Total	1096.8	712.3	904.6	384.5	2163.0	1150.0	1656.5			115.0	299.2	162.2	0.0
Mean	35.4	23.0	29.2	12.4	69.8	37.1	53.4			3.7	9.7	5.2	
S.D.	1.8	2.8	1.7	3.3	8.6	9.9	7.6			1.2	5.9	0.8	
C.V.%	5.0	12.0	5.7	26.3	12.4	26.8	14.3			32.4	61.1	15.0	
High.	37.8	27.8	32.4	19.7	84.0	58.0	69.5			6.0	39.8	6.5	
Low.	31.7	17.3	25.7	6.8	49.0	21.0	39.5			2.2	2.8	3.1	
Mode	37	24	27.6	9.9	78	38	55.5			6	9.3	5.2	

October-2011												
Date	D.B.		W.B.		V.P.		Soil Temperature					
	I	II	I	II	I	II	5(I)	10(I)	20(I)	5(II)	10(II)	20(II)
1	26.2	33.2	23.4	24.4	19.8	17.5	26.0	26.8	30.0	35.0	33.5	31.4
2	26.0	32.0	23.2	25.0	19.6	19.5	26.0	26.5	30.0	34.0	33.3	31.6
3	27.2	31.6	23.4	24.4	19.2	18.5	25.4	26.0	29.8	35.2	34.0	31.6
4	26.4	31.0	24.0	24.8	20.9	19.7	25.6	26.2	30.1	35.3	33.6	31.5
5	27.0	32.0	23.4	25.0	19.3	19.5	26.2	27.5	30.0	37.4	35.2	31.8
6	26.7	34.0	23.2	25.0	19.1	18.2	26.5	27.2	30.6	39.5	36.4	32.3
7	26.6	33.5	23.0	23.4	18.9	15.4	26.8	28.0	31.0	40.0	37.2	33.6
8	26.0	33.8	24.0	23.2	21.2	14.8	27.0	27.8	31.3	39.0	37.2	32.8
9	26.5	34.0	24.4	23.4	21.6	15.1	25.5	25.0	31.5	40.0	38.0	33.5
10	27.6	35.0	23.1	25.0	19.0	17.7	28.3	29.0	32.5	40.5	38.4	34.0
11	28.8	36.5	23.4	25.0	18.3	16.7	29.0	29.5	33.0	40.8	38.6	34.6
12	29.0	37.0	22.8	23.8	17.0	14.0	29.2	30.4	33.0	41.4	39.0	34.8
13	29.0	36.0	22.6	24.0	16.7	15.0	29.5	30.0	33.6	42.0	39.0	35.2
14	30.0	35.6	22.4	24.4	15.7	16.5	31.0	32.0	34.0	40.0	38.0	33.0
15	27.2	37.0	22.0	24.4	19.7	15.1	29.5	30.0	33.0	41.5	38.8	35.2
16	27.0	36.6	23.2	24.8	19.0	16.2	30.0	30.8	34.0	42.0	39.5	35.6
17	28.0	36.5	24.0	25.2	19.9	17.1	30.0	31.4	34.6	42.1	39.6	36.0
18	28.5	36.5	24.4	26.0	20.4	18.8	31.0	32.0	35.0	42.0	40.5	36.6
19	28.2	33.2	24.4	26.0	20.6	20.7	31.0	31.8	35.0	37.0	35.0	34.6
20	24.0	34.6	21.0	21.2	16.8	10.9	27.0	28.0	33.0	41.0	38.6	34.6
21	23.0	35.5	20.0	21.6	15.7	10.9	27.0	28.0	33.0	41.7	38.6	34.6
22	22.8	36.5	20.0	22.6	19.5	12.1	27.2	28.5	33.0	41.7	38.8	35.0
23	24.6	36.0	19.2	21.0	13.4	09.5	27.0	27.8	33.0	40.8	37.2	34.6
24	22.5	35.0	18.0	22.0	12.8	11.8	26.6	28.1	32.8	39.5	37.5	33.6
25	23.0	35.6	19.0	23.0	14.1	13.4	27.0	28.3	32.5	40.5	37.4	34.4
26	24.6	35.3	19.0	22.0	16.5	11.7	27.5	28.5	33.0	40.3	37.2	34.0
27	24.0	35.6	20.0	22.6	15.1	12.6	27.2	28.5	32.6	40.2	37.6	34.7
28	21.5	36.0	19.0	23.8	15.0	14.6	27.0	28.5	33.0	40.3	37.8	34.0
29	25.4	35.2	19.6	22.4	13.5	12.5	28.0	29.0	33.0	40.0	37.5	34.5
30	25.5	35.0	22.8	22.0	19.1	11.8	29.0	29.9	33.5	38.0	36.0	34.8
31	25.4	34.0	21.8	23.0	17.4	14.3	29.6	30.5	33.6	38.4	36.9	34.9
Total	808.2	1079.3	683.7	734.4	554.8	472.1	863.6	891.5	1008.0	1227.1	1155.9	1053.4
Mean	26.1	34.8	22.1	23.7	17.9	15.2	27.9	28.8	32.5	39.6	37.3	34.0
S.D.	2.2	1.7	2.0	1.4	2.5	3.0	1.7	1.8	1.5	2.3	1.9	1.4
C.V.%	8.3	4.7	8.9	5.9	13.9	19.9	6.2	6.3	4.6	5.7	5.0	4.1
Highest	30.0	37.0	24.4	26.0	21.6	20.7	31.0	32.0	35.0	42.1	40.5	36.6
Lowest	21.5	31.0	18.0	21.0	12.8	9.5	25.4	25.0	29.8	34.0	33.3	31.4

November-2011													
Date	Temperature c°				RH. %			WD		W.S.	B.S.S	EVAPO	Rainfall
	Max	Min	Mean	Range	I	II	Mean	I	II	(kmph)	(hrs.)	(mm)	(mm)
1	36.0	26.2	31.1	9.8	44	34	39.0	36	05	03.9	03.6	5.6	000.0
2	33.8	24.7	29.3	9.1	53	32	42.5	36	36	04.3	02.2	06.4	000.0
3	35.5	20.0	27.8	15.5	74	27	50.5	00	09	02.7	05.8	04.9	000.0
4	35.7	20.9	28.3	14.8	72	31	51.5	27	05	03.2	09.3	04.7	000.0
5	35.5	22.8	29.2	12.7	70	36	53.0	18	14	03.2	09.5	05.2	000.0
6	35.6	21.6	28.6	14.0	74	40	57.0	23	09	02.3	09.2	04.6	000.0
7	36.0	21.2	28.6	14.8	72	31	51.5	09	25	02.4	09.4	04.8	000.0
8	36.5	21.5	29.0	15.0	73	29	51.0	00	09	02.0	08.4	04.5	000.0
9	36.0	21.6	28.8	14.4	72	32	52.0	00	02	02.6	08.7	04.8	000.0
10	36.4	19.4	27.9	17.0	78	25	51.5	02	09	02.0	09.4	04.1	000.0
11	36.0	19.3	27.7	16.7	58	22	40.0	02	02	02.3	09.7	05.2	000.0
12	35.3	21.0	28.2	14.3	62	31	46.5	36	36	03.6	09.6	05.5	000.0
13	34.6	20.4	27.5	14.2	78	31	54.5	00	36	04.0	09.5	05.6	000.0
14	34.5	19.5	27.0	15.0	77	32	54.5	36	36	04.2	09.7	05.5	000.0
15	35.6	20.7	28.2	14.9	54	31	42.5	14	05	04.1	09.6	05.7	000.0
16	35.0	18.4	26.7	16.6	74	27	50.5	36	46	03.4	09.0	05.2	000.0
17	34.6	18.2	26.4	16.4	70	27	48.5	27	34	02.9	09.5	05.3	000.0
18	34.3	17.5	25.9	16.8	86	29	57.5	00	36	02.3	09.4	05.0	000.0
19	34.8	16.7	25.8	18.1	73	33	53.0	00	34	02.6	09.7	05.0	000.0
20	34.5	17.3	25.9	17.2	77	27	52.0	00	27	03.7	09.5	05.8	000.0
21	33.5	16.1	24.8	17.4	63	23	43.0	18	36	02.3	09.8	04.8	000.0
22	35.7	17.0	26.4	18.7	62	23	42.5	29	05	02.5	09.4	06.0	000.0
23	35.0	17.1	26.1	17.9	70	23	46.5	09	36	02.5	09.8	04.0	000.0
24	34.5	16.0	25.3	18.5	49	29	39.0	32	05	02.7	09.6	05.6	000.0
25	33.0	16.0	24.5	17.0	70	32	51.0	05	11	02.5	08.6	04.7	000.0
26	33.0	18.5	25.8	14.5	65	36	50.5	00	36	02.5	07.8	03.9	000.0
27	32.6	18.6	25.6	14.0	63	40	51.5	05	05	03.1	04.0	04.0	000.0
28	33.2	24.6	28.9	8.6	45	49	47.0	02	05	07.1	02.8	05.7	000.0
29	29.2	24.5	26.9	4.7	51	41	46.0	36	09	07.5	00.0	04.5	000.0
30	34.8	22.2	28.5	12.6	60	43	51.5	34	23	03.5	02.3	05.5	000.0
31	1040.7	599.5	820.1	441.2	1989.0	946.0	1467.5			97.9	234.8	152.1	0.0
Total	34.7	20.0	27.3	14.7	66.3	31.5	48.9			3.3	7.8	5.1	
Mean	1.5	2.8	1.6	3.2	10.7	6.4	5.1			1.3	2.9	0.6	
S.D.	4.3	14.0	5.7	21.7	16.1	20.2	10.5			39.6	36.9	12.4	
C.V.%	36.5	26.2	31.1	18.7	86.0	49.0	57.5			7.5	9.8	6.4	
High.	29.2	16.0	24.5	4.7	44.0	22.0	39.0			2.0	0.0	3.9	
Low.	36	22	29	14	70	31	52			2.3	9.5	5.6	
Mode													

November-2011												
Date	D.B.		W.B.		V.P.		Soil Temperature					
	I	II	I	II	I	II	5(I)	10(I)	20(I)	5(II)	10(II)	20(II)
1	28.6	32.6	20.4	21.6	13.0	12.6	20.0	30.8	33.5	37.5	36.0	34.5
2	27.0	34.6	20.6	22.6	14.3	13.2	29.5	30.3	33.5	39.0	36.8	35.0
3	22.0	34.8	19.0	21.6	14.5	11.3	27.8	29.0	33.0	39.2	37.4	34.5
4	24.2	35.0	20.8	22.6	16.4	13.0	28.6	29.5	33.5	39.0	37.2	34.5
5	25.6	34.8	21.8	23.6	17.2	15.0	29.0	30.0	33.7	39.0	37.5	34.6
6	25.0	35.5	21.8	24.2	17.9	16.4	29.0	30.0	33.4	39.6	38.0	34.7
7	24.5	35.7	21.0	23.0	16.5	13.3	28.6	29.6	34.4	39.6	37.6	34.5
8	25.2	35.5	21.8	22.6	17.5	12.7	29.0	30.0	33.6	40.0	37.6	34.7
9	26.0	35.0	22.4	22.8	18.1	13.4	29.0	30.0	34.0	40.4	38.0	34.4
10	22.6	35.4	20.0	21.6	16.0	10.9	27.5	29.0	33.4	40.5	37.4	34.6
11	22.8	34.4	19.4	20.2	13.6	09.1	27.4	28.8	33.0	39.4	36.6	34.1
12	26.5	34.0	21.4	22.0	16.2	12.5	28.0	29.0	33.0	39.2	36.6	34.0
13	23.6	34.0	21.0	22.0	17.1	12.5	26.7	29.0	33.2	38.6	36.4	34.0
14	22.5	34.6	19.8	22.6	15.7	13.2	27.5	28.6	32.7	39.3	36.2	33.7
15	27.4	34.2	21.0	22.0	14.7	12.4	28.0	29.0	32.5	39.3	36.7	34.0
16	22.0	33.2	19.0	20.5	15.5	10.3	27.0	28.6	32.6	39.0	36.4	33.6
17	21.2	33.2	17.8	20.5	13.2	10.4	26.5	28.0	32.0	38.8	36.0	33.4
18	19.0	33.2	17.5	21.0	13.9	11.2	26.2	28.7	32.0	38.5	35.6	33.0
19	21.0	34.0	18.0	22.4	13.6	13.2	25.5	27.0	31.5	38.5	35.8	32.6
20	20.0	34.0	17.4	21.0	13.5	10.7	26.5	28.0	31.5	39.0	36.5	33.0
21	20.6	35.0	16.4	20.8	11.5	09.8	25.0	27.0	31.5	38.0	35.5	32.6
22	19.4	34.0	15.4	20.0	10.7	09.0	25.0	27.0	31.0	38.0	35.2	31.3
23	19.0	33.5	15.6	19.7	13.4	09.6	25.0	27.5	30.0	37.4	35.0	32.0
24	21.0	32.0	14.7	20.0	09.9	10.3	24.0	25.5	30.0	36.5	33.4	31.0
25	18.8	32.4	15.6	21.0	11.4	11.7	24.5	26.0	31.0	36.4	33.2	31.2
26	20.4	31.8	16.4	21.4	11.5	12.0	25.1	26.5	34.4	35.6	33.5	31.6
27	21.2	30.5	17.0	21.2	12.0	13.2	25.0	26.5	30.6	34.0	32.5	31.0
28	26.0	28.4	18.4	21.2	11.2	14.3	27.5	28.0	30.6	31.6	30.6	31.0
29	28.0	34.0	21.0	24.0	14.3	16.3	27.0	27.7	30.0	36.6	33.6	31.5
30	25.4	34.1	20.2	24.4	14.5	17.0	27.0	28.2	31.0	37.0	34.4	31.2
Total	696.5	1013.4	572.6	654.1	428.8	370.5	802.4	852.8	970.1	1144.5	1073.2	995.8
Mean	23.2	33.8	19.1	21.8	14.3	12.4	26.7	28.4	32.3	38.2	35.8	33.2
S.D.	2.9	1.6	2.3	1.3	2.3	2.1	2.0	1.4	1.4	1.9	1.8	1.4
C.V.%	12.6	4.7	11.8	5.8	15.9	16.9	7.5	4.8	4.2	5.0	5.0	4.2
Highest	28.6	35.7	22.4	24.4	18.1	17.0	29.5	30.8	34.4	40.5	38.0	35.0
Lowest	18.8	28.4	14.7	19.7	9.9	9.0	20.0	25.5	30.0	31.6	30.6	31.0

December-2011													
Date	Temperature c°				RH. %			WD		W.S.	B.S.S	EVAPO	Rainfall
	Max	Min	Mean	Range	I	II	Mean	I	II	(kmph)	(hrs.)	(mm)	(mm)
1	34.6	21.5	28.1	13.1	81	35	58	18	34	03.0	07.5	03.2	0.0
2	35.8	19.5	27.7	16.3	80	24	52	32	36	02.6	09.3	05.2	0.0
3	34.2	18.2	26.2	16.0	58	25	42	18	14	03.6	09.6	06.4	0.0
4	34.5	18.0	26.3	16.5	63	35	49	00	05	03.5	09.4	06.5	0.0
5	34.4	19.5	27.0	14.9	93	72	83	14	34	03.8	09.1	05.0	0.0
6	32.6	16.2	24.4	16.4	86	31	59	05	36	03.0	09.1	04.0	0.0
7	33.0	16.5	24.8	16.5	89	35	62	00	05	02.6	09.4	03.9	0.0
8	33.0	16.4	24.7	16.6	83	28	56	18	32	02.0	09.3	03.6	0.0
9	33.5	15.0	24.3	18.5	77	27	52	18	36	03.0	09.2	04.9	0.0
10	31.6	20.5	26.1	11.1	36	25	31	05	36	06.5	09.7	05.3	0.0
11	30.4	12.5	21.5	17.9	40	19	30	36	05	06.8	09.6	07.5	0.0
12	29.5	8.8	19.2	20.7	57	15	36	14	05	03.6	09.7	05.0	0.0
13	30.0	11.4	20.7	18.6	52	28	40	05	05	03.6	09.4	04.5	0.0
14	33.0	12.4	22.7	20.6	64	18	41	14	36	02.9	08.5	04.2	0.0
15	30.5	12.4	21.5	18.1	66	26	46	18	34	02.9	09.4	04.5	0.0
16	31.0	12.0	21.5	19.0	68	26	47	05	36	03.1	08.8	04.2	0.0
17	32.0	14.0	23.0	18.0	71	29	50	05	27	02.7	08.9	04.2	0.0
18	32.8	13.0	22.9	19.8	80	30	55	36	34	02.8	08.8	03.8	0.0
19	31.5	13.4	22.5	18.1	62	24	43	05	02	03.5	08.5	04.9	0.0
20	31.0	10.6	20.8	20.4	68	24	46	18	02	03.6	09.0	04.4	0.0
21	29.0	12.4	20.7	16.6	73	25	49	18	05	04.1	07.7	03.7	0.0
22	29.8	13.0	21.4	16.8	56	24	40	14	36	07.0	08.6	06.7	0.0
23	28.2	11.0	19.6	17.2	50	26	38	05	36	07.3	07.1	06.2	0.0
24	29.2	10.0	19.6	19.2	81	31	56	00	36	06.0	07.5	04.7	0.0
25	29.5	10.5	20.0	19.0	72	33	53	00	36	03.1	08.1	03.8	0.0
26	29.0	9.8	19.4	19.2	79	35	57	18	02	04.6	08.6	04.5	0.0
27	28.5	9.5	19.0	19.0	40	20	30	36	36	03.4	09.4	05.0	0.0
28	27.5	9.1	18.3	18.4	76	20	48	18	36	04.6	09.1	04.8	0.0
29	27.5	9.0	18.3	18.5	46	24	35	18	36	04.6	09.0	05.0	0.0
30	28.8	12.0	20.4	16.8	63	20	42	00	36	06.0	07.7	04.4	0.0
31	28.5	15.8	22.2	12.7	30.0	14.0	22	36.0	02.0	07.0	07.3	05.2	0.0
Total	964.4	423.9	694.2	540.5	2040.0	848.0	1444.0			126.8	272.3	149.2	0.0
Mean	31.1	13.7	22.4	17.4	65.8	27.4	46.6			4.1	8.8	4.8	
S.D.	2.3	3.7	2.9	2.2	16.3	10.0	11.8			1.5	0.8	1.0	
C.V.%	7.5	26.7	12.7	12.9	24.8	36.7	25.4			37.7	8.7	20.6	
High.	35.8	21.5	28.1	20.7	93.0	72.0	82.5			7.3	9.7	7.5	
Low.	27.5	8.8	18.3	11.1	30.0	15.0	29.5			2.0	7.1	3.2	
Mode	33	12	21	19	81	24	52			3.6	9.4	5	

December-2011												
Date	D.B.		W.B.		V.P.		Soil Temperature					
	I	II	I	II	I	II	5(I)	10(I)	20(I)	5(II)	10(II)	20(II)
1	24.0	34.5	21.8	23.2	18.2	14.4	27.0	28.5	31.5	38.5	35.5	32.6
2	22.4	33.7	21.0	20.2	17.2	09.5	27.0	28.0	32.0	37.7	35.4	32.6
3	22.2	33.6	17.2	20.4	11.7	10.0	25.5	27.0	31.0	37.7	35.2	32.4
4	22.4	33.4	18.0	22.4	12.8	13.5	26.5	27.5	31.5	37.7	35.0	32.5
5	20.8	31.6	20.0	27.6	17.0	25.0	27.0	28.0	31.4	37.5	34.4	32.4
6	19.4	31.8	18.0	20.4	14.5	11.0	25.0	26.6	31.0	36.8	33.6	31.7
7	18.5	32.0	17.4	21.5	14.3	12.8	24.8	26.5	30.7	37.2	34.0	31.0
8	19.2	32.7	17.4	20.4	13.8	10.5	24.5	26.0	30.4	36.8	34.0	31.5
9	19.0	31.1	16.6	19.0	12.7	09.1	24.0	26.0	30.0	35.5	32.6	31.0
10	23.5	29.5	15.0	17.4	07.7	07.6	24.6	26.0	30.0	34.8	32.0	30.6
11	18.0	29.0	11.4	16.0	06.1	05.8	22.2	23.6	28.5	24.0	31.6	29.6
12	12.8	29.6	9.0	15.5	06.3	04.0	19.5	21.6	22.8	33.6	30.5	28.6
13	15.8	31.5	11.0	19.4	07.0	09.5	20.0	22.0	28.0	34.2	30.5	28.2
14	15.4	30.2	12.1	16.6	08.5	06.5	20.5	22.5	27.5	34.0	31.0	28.5
15	16.4	30.0	13.0	18.0	09.2	08.2	20.5	22.3	27.5	32.8	30.0	28.0
16	15.5	31.8	12.4	19.4	08.9	09.3	20.0	22.0	27.0	33.5	30.0	28.0
17	15.8	32.4	13.0	20.4	09.6	11.2	21.0	22.5	27.0	34.1	30.6	28.1
18	14.0	31.0	12.2	19.5	09.6	10.0	21.2	23.4	27.5	33.0	30.0	27.8
19	17.0	30.5	13.2	18.0	09.8	07.8	21.0	22.6	27.0	33.0	30.0	28.0
20	15.0	29.0	12.0	17.0	08.7	07.3	20.0	22.0	27.0	32.5	29.6	27.6
21	13.6	28.4	11.2	16.8	08.5	07.3	20.6	22.2	27.7	31.6	28.6	27.4
22	15.2	28.0	11.0	16.4	07.3	07.0	21.0	22.3	26.8	31.2	28.6	27.3
23	16.0	29.0	11.0	17.5	06.8	08.1	20.0	21.0	26.0	31.6	28.8	26.8
24	12.2	29.0	10.6	18.4	08.6	09.4	19.6	21.0	26.2	32.0	29.0	26.8
25	13.7	28.0	11.2	18.0	08.4	09.4	19.2	20.6	25.7	31.2	27.2	26.5
26	10.0	28.0	8.4	18.4	07.3	10.0	18.6	20.6	25.6	31.5	28.4	26.5
27	18.5	26.6	11.8	14.5	06.4	05.1	18.0	20.0	25.0	30.5	27.6	25.8
28	11.5	26.0	9.4	14.2	08.3	05.0	18.0	19.6	24.5	28.9	27.4	25.6
29	14.6	28.0	9.4	16.4	05.7	07.0	19.0	20.5	25.0	31.0	27.0	26.0
30	12.8	27.5	9.5	15.2	07.0	05.6	19.6	21.0	25.2	30.6	27.8	25.8
31	20.4	26.6	12.0	13.4	05.5	03.6	20.0	21.0	25.0	30.2	27.7	26.0
Total	525.6	934.0	417.2	571.5	303.4	280.5	675.4	724.4	862.0	1035.2	953.6	891.2
Mean	17.0	30.1	13.5	18.4	9.8	9.0	21.8	23.4	27.8	33.4	30.8	28.7
S.D.	3.7	2.3	3.7	2.9	3.6	3.9	2.9	2.7	2.5	3.2	2.7	2.4
C.V.%	21.9	7.6	27.6	15.9	36.5	43.6	13.2	11.8	9.0	9.6	8.8	8.3
Highest	24.0	34.5	21.8	27.6	18.2	25.0	27.0	28.5	32.0	38.5	35.5	32.6
Lowest	10.0	26.0	8.4	13.4	5.5	3.6	18.0	19.6	22.8	24.0	27.0	25.6

APPENDIX - 2

The Standard Meteorological periods and weeks.					
Period No.	Week No.	Dates	Period No.	Week No.	Dates
I	01-Jan	1--7	VII	27-Jul	2--8
	2	8--14		28	9--15
	3	15--21		29	16--22
	4	22--28		30	23--29
	5	29--4		31	30--5
II	06-Feb	5--11	VIII	32-Aug	6--12
	7	12--18		33	13--19
	8	19--25		34	20--26
	9	26--4*		35	27--2
III	10-Mar	5--11	IX	36-Sep	3--9
	11	12--18		37	10--16
	12	19--25		38	17--23
	13	26--1		39	24--30
IV	14-Apr	2--8	X	40-Oct	1--7
	15	9--15		41	8--14
	16	16--22		42	15--21
	17	23--29		43	22--28
	18	30--6		44	29--4
V	19-May	7--13	XI	45-Nov	5--11
	20	14--20		46	12--18
	21	21--27		47	19--25
	22	28--3		48	26--2
VI	23-Jun	4--10	XII	49-Dec	3--9
	24	11--17		50	10--16
	25	18--24		51	17--23
	26	25--1		52	24--31"

* In Leap year the week No.9 will have eight days i.e. from 26 February to 4 March.

" 52nd week will have 8 days, 24 to 31 December